



1207/20 Pelican Street Surry Hills, NSW

1 bed | 1 bath | 1 car

R&W

Remarkable modern city living in an architect-designed 'Monument' This residence has impressive views into the CBD, full of light and wow factor. With a generous floorplan, it offers an impressive amount of space with the bonus study area.

rwebay.com.au/7815094

Luke McDonnell 0418 844 110

Penny Timothy 0418 546 500

Proudly Richardson&Wrench

Richardson & Wrench Elizabeth Bay / Potts Point
02 8356 2700

• From celebrated Wood/Marsh Architecture

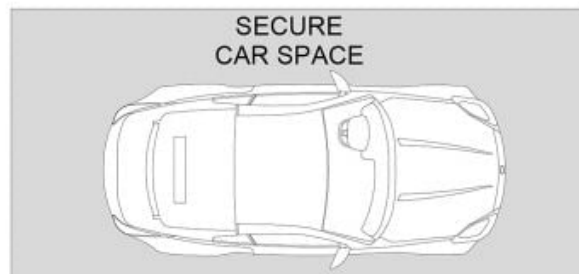
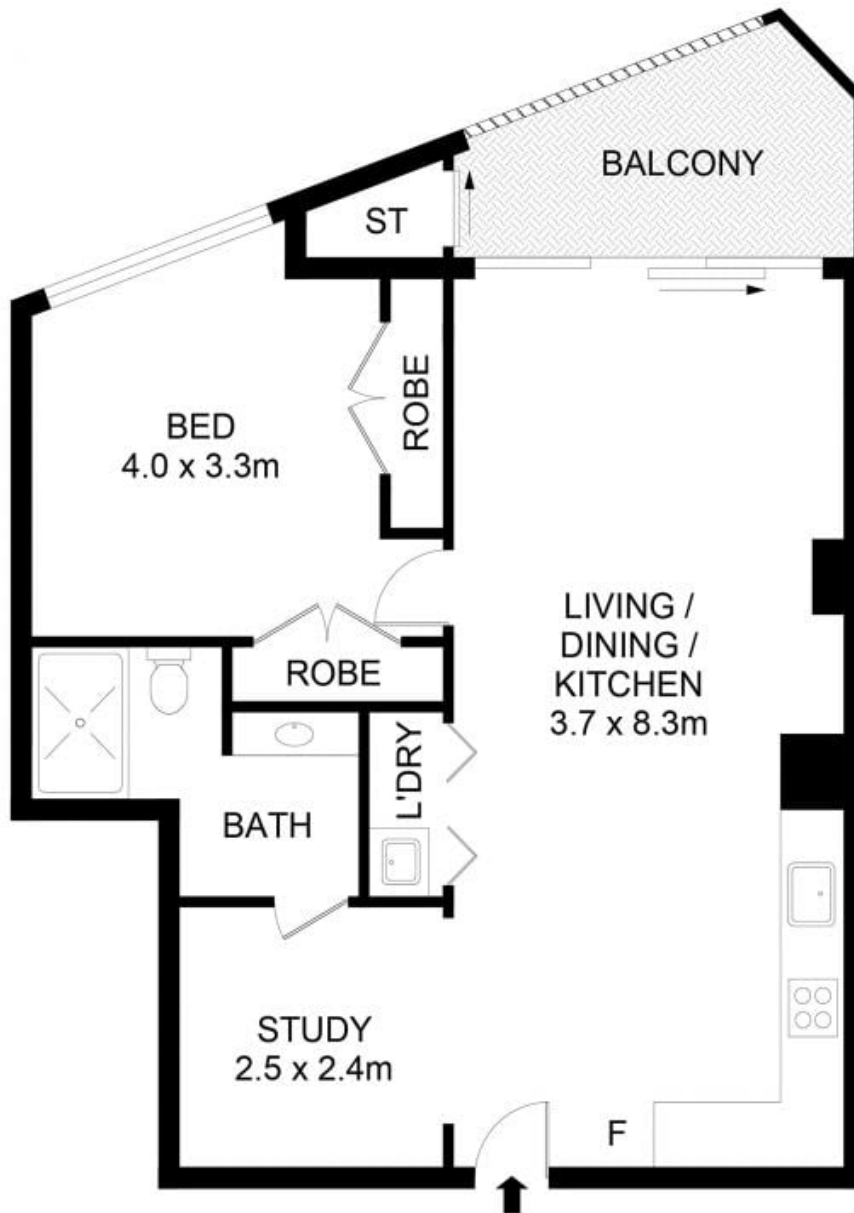
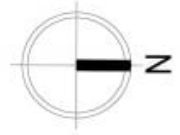
• Western views, floor to ceiling glass

• Enclosed entertainer's balcony

• Open plan living & sperate study space

• Caesarstone kitchen, Stainless appliances

Approximate outgoings:...



1207/20 Pelican Street, Surry Hills



Disclaimer

Floor Plan measurements are approximate and are for illustrative purposes only. While we cannot doubt the floor plans accuracy, we make no guarantee, warranty or representation as to the accuracy and completeness of the floor plan.

Every precaution has been taken to establish accuracy of the information in this brochure but does not constitute any representation by the vendor or agent.

R&W