



## 11/32 Balfour Road Rose Bay, NSW

2 bed | 1 bath

Beautifully positioned on the top floor of a small boutique block of just 12, this character Art-Deco apartment enjoys a leafy street outlook while conveniently located to the harbour foreshore. Offering a spacious floorplan, great natural light, character features, eat-in kitchen & internal laundry. Well positioned just a short walk to Plumer Road village shops, Lyne Park & Rose Bay ferry terminal.

- Elevated NE aspect in Art-Deco block
- Cross flow ventilation, light interiors

Council Rates: \$368pq ...

# R&W

[rwebay.com.au/7828565](https://rwebay.com.au/7828565)

Rod Angus 0419 599 888

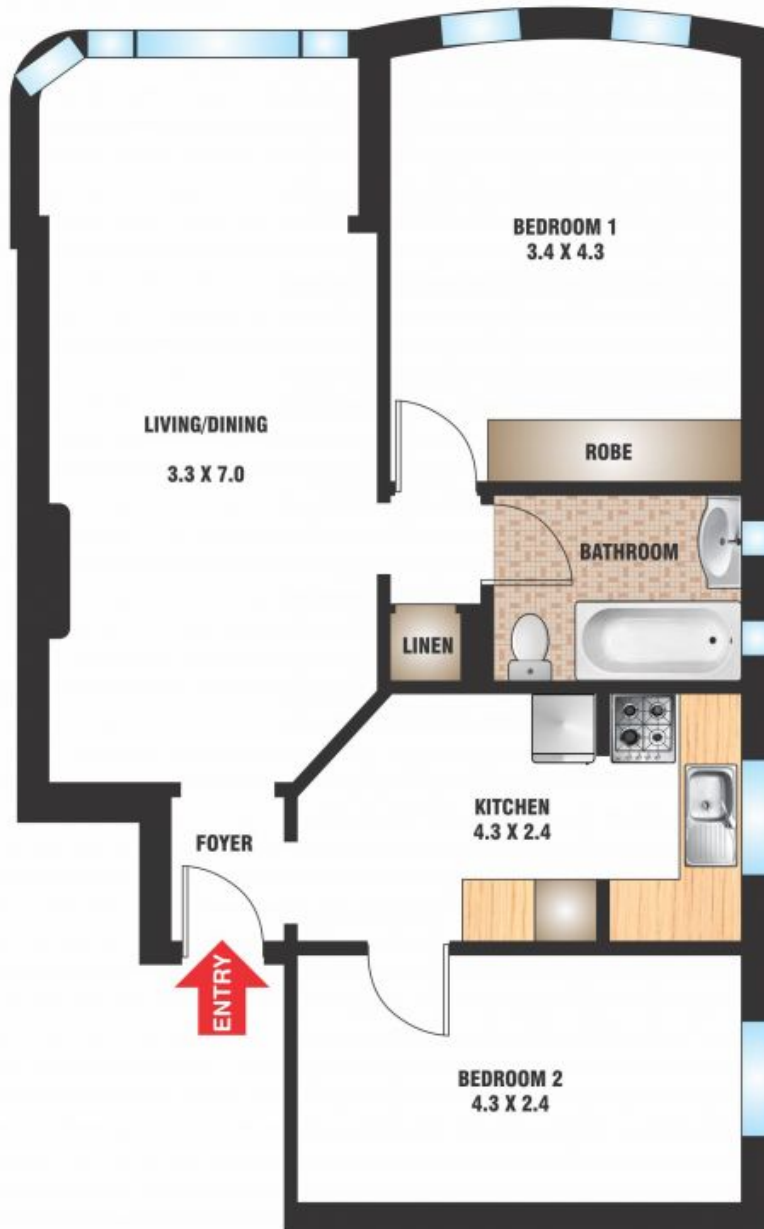
**Proudly Richardson&Wrench**

Richardson & Wrench Elizabeth Bay / Potts Point  
02 8356 2700



Elizabeth Bay  
TEL: 02 8356 2700

11/32 Balfour Road  
ROSE BAY



FLOOR PLAN BY BORTEX PTY LTD PH: 0414 922 679

"The information contained herein has been provided by our Principal and third parties, which we merely pass on without any representation or warranty given, intended or implied by us as to its correctness and with no liability accepted by us in this regard. You must rely on your own inquiries as to its accuracy or otherwise."

Every precaution has been taken to establish accuracy of the information in this brochure but does not constitute any representation by the vendor or agent.

