



14/20 New South Head Road Edgecliff, NSW

1 bed | 1 bath

R&W

Embark on your real estate journey with this meticulously curated boutique 46m2 strata title apartment in The Winston building, strategically positioned just moments away from the green expanse of harbourside Rushcutters Bay Park. Perfect for the astute investor or the discerning first-home buyer, this residence seamlessly blends classic Art Deco charm with modern practicality.

Step into a space where soaring ceilings, Art Deco feature lighting, fresh new luxury carpet, an original curved feature wall and polished timber flooring create an ambiance of understated sophistication.

...

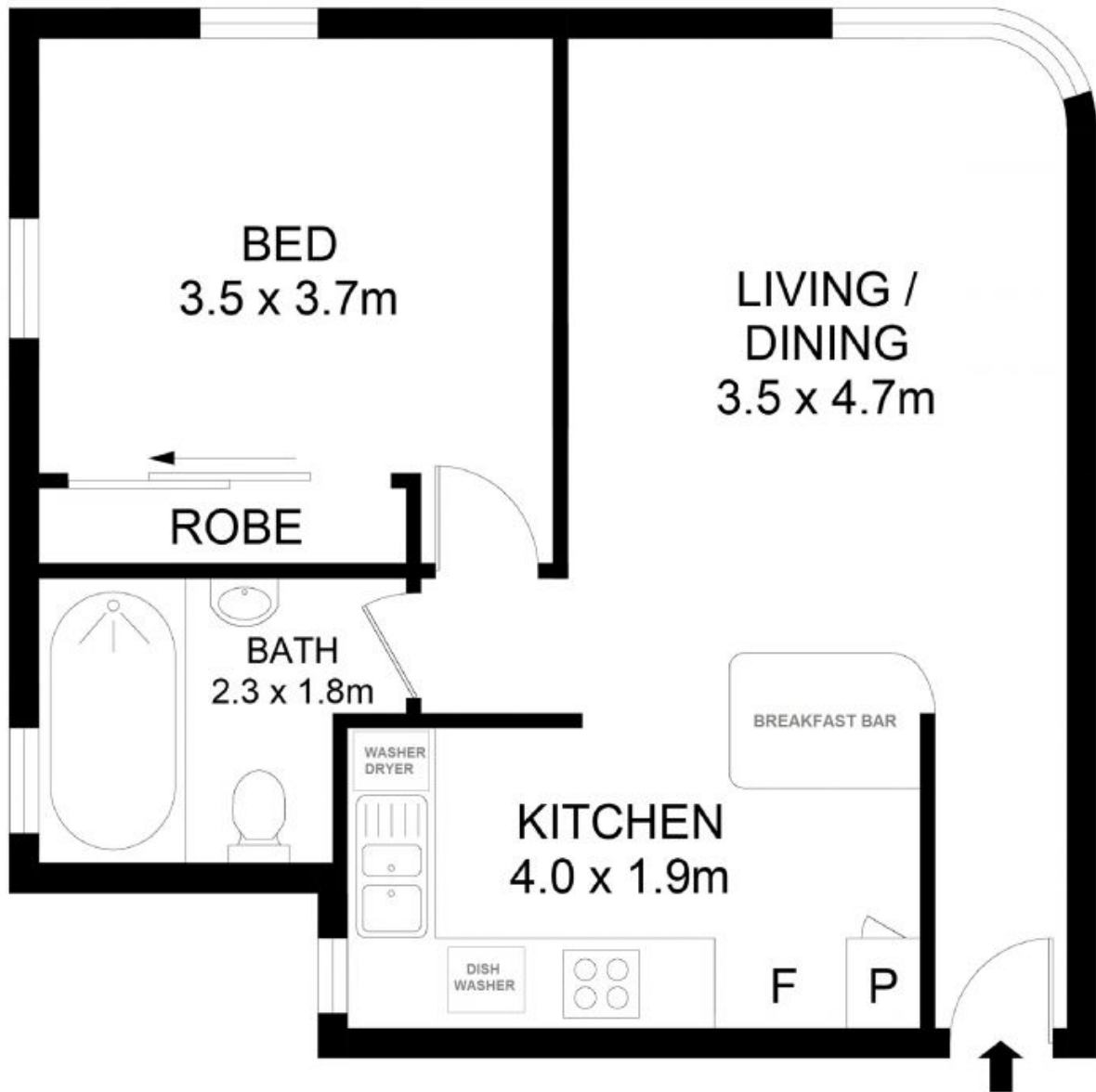
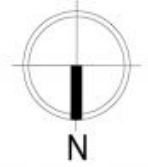
rwebay.com.au/7845076

Penny Timothy 0418 546 500

Luke McDonnell 0418 844 110

Proudly Richardson&Wrench

Richardson & Wrench Elizabeth Bay / Potts Point
02 8356 2700



14/20 New South Head Road, Edgecliff

Disclaimer

Floor Plan measurements are approximate and are for illustrative purposes only. While we cannot doubt the floor plans accuracy, we make no guarantee, warranty or representation as to the accuracy and completeness of the floor plan.

Every precaution has been taken to establish accuracy of the information in this brochure but does not constitute any representation by the vendor or agent.

