



10 Hewlett Street Bronte, NSW

2 bed | 1 bath

Nestled in a coveted family-friendly Bronte pocket, a t...

R&W

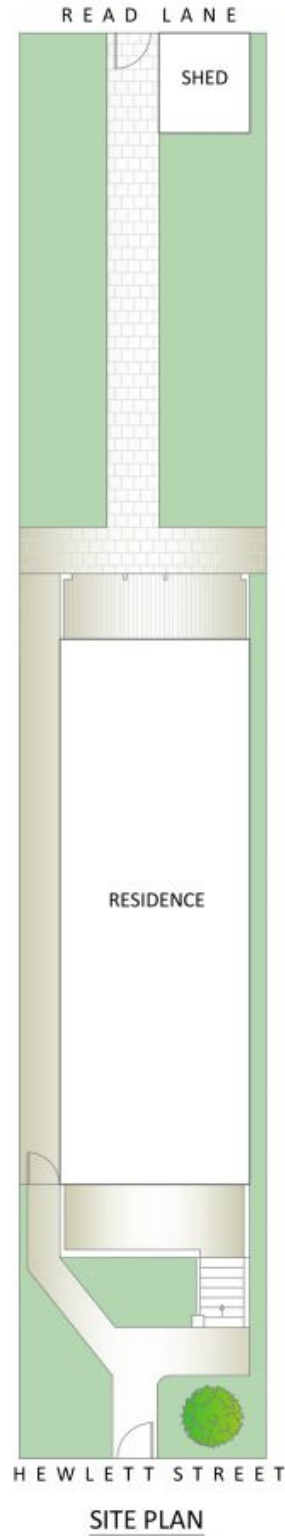
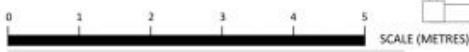
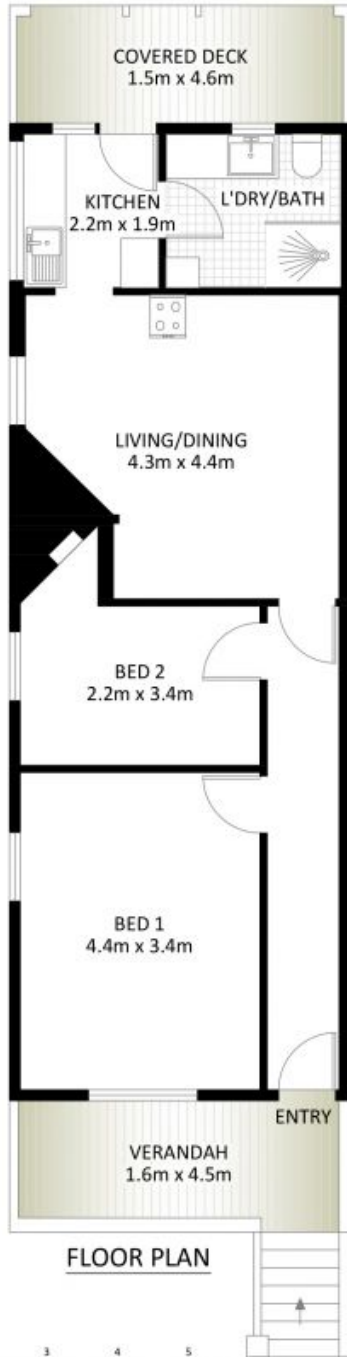
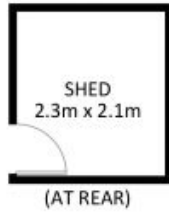
rwebay.com.au/7875381

Jason Boon 0418 671 494

Geoff Cox 0418 231 004

Proudly Richardson&Wrench

Richardson & Wrench Elizabeth Bay / Potts Point
02 8356 2700



10 Hewlett Street, Bronte

*PLANS SHOWN ONLY INDICATIVE OF LAYOUT. DIMENSIONS ARE APPROXIMATE.

Measurements are approximate and not to scale. The vendor, agency and supplier will accept no liability for its accuracy. Interested parties are advised to make their own independent enquiries.

Internal Floor Area : Approx. 60m²