



53/12 Wylde Street Potts Point, NSW

1 bed | 1 bath

This spacious one bedroom apartment situated on the fourth floor of a security building offers spectacular water views located in the heart of Potts Point.

The very best inner city lifestyle has to offer, with landmark outlooks from the balcony, this apartment takes in the CBD skyline & Botanic Gardens. To the east, you have water views all the way to the Heads - quintessential Sydney.

- North facing windows & full-width balcony...

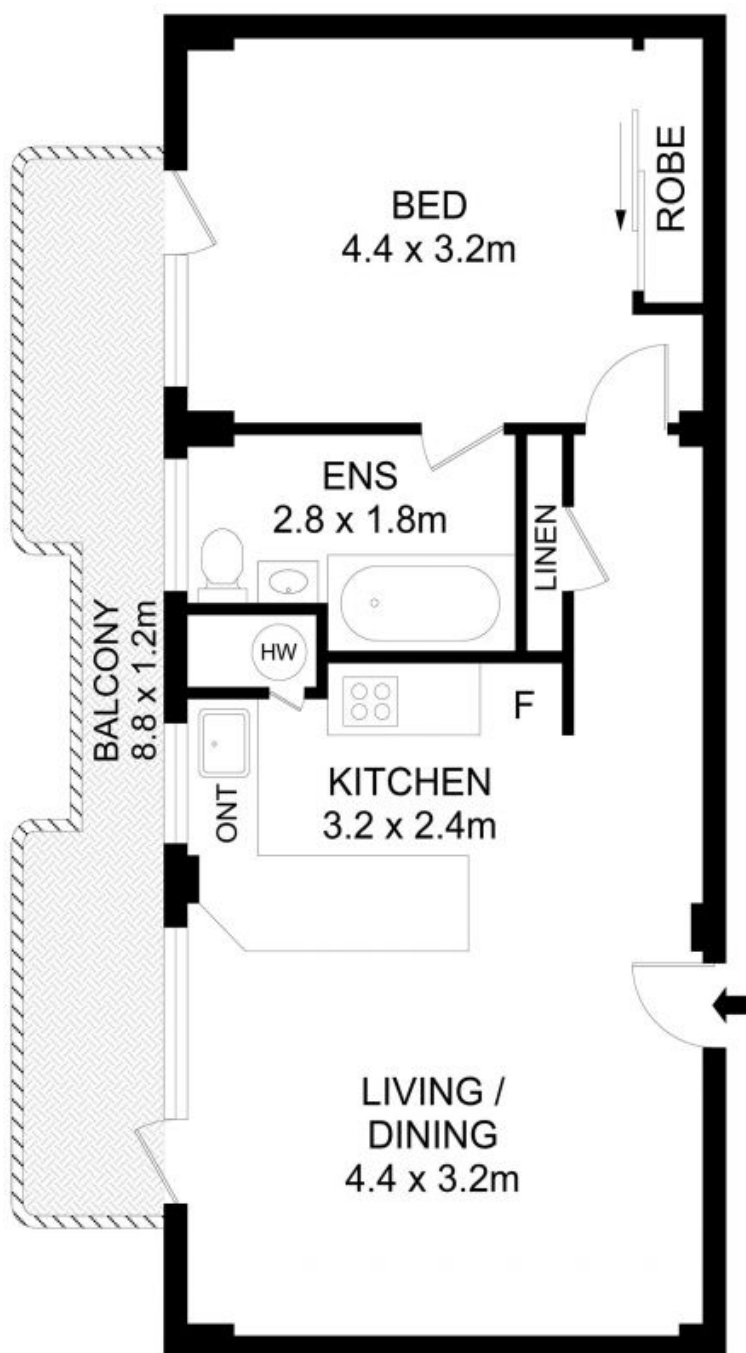
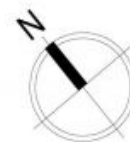
R&W

rwebay.com.au/7890991

Angelo Bouras 0401 658 653

Proudly Richardson&Wrench

Richardson & Wrench Elizabeth Bay / Potts Point
02 8356 2700



53/12 Wylde Street, Potts Point



Disclaimer

Floor Plan measurements are approximate and are for illustrative purposes only. While we cannot doubt the floor plans accuracy, we make no guarantee, warranty or representation as to the accuracy and completeness of the floor plan.

Every precaution has been taken to establish accuracy of the information in this brochure but does not constitute any representation by the vendor or agent.

R&W