



## 2/181 Victoria Street Potts Point, NSW

1 bed | 1 bath

This newly refurbished oversized one bedroom apartment in an Art Deco block of only 6, is situated in leafy Victoria Street just minutes from cafes, shops, and restaurants. This apartment has been thoughtfully restored while keeping the character of the beautiful Art Deco charm. This boutique hideaway offers a quiet escape from the fast-paced city living whilst being reassuringly close to the excitement. Kings Cross station and the CBD within walking distance, it offers a superb blend of flexibility, functionality and convenience.

Approx Levies...

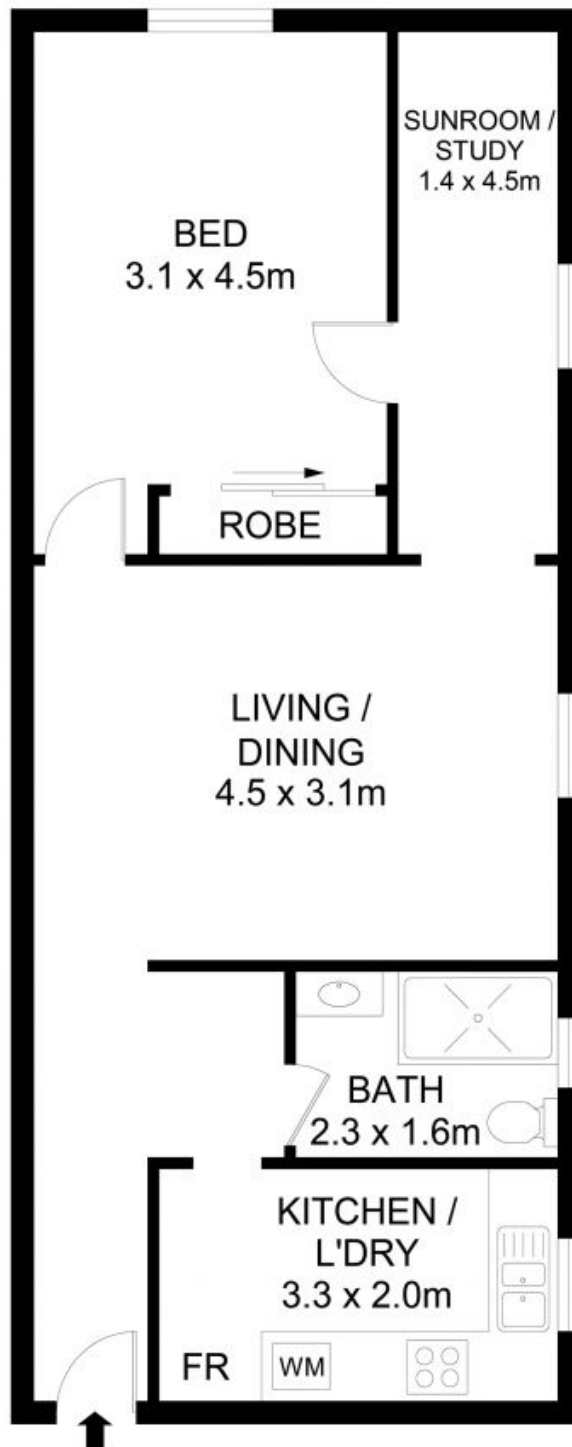
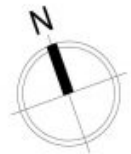
# R&W

[rwebay.com.au/7893253](http://rwebay.com.au/7893253)

Angelo Bouras 0401 658 653

**Proudly Richardson&Wrench**

Richardson & Wrench Elizabeth Bay / Potts Point  
02 8356 2700



2/181 Victoria Street, Potts Point 0 1 2 5

**Disclaimer**

Floor Plan measurements are approximate and are for illustrative purposes only. While we cannot doubt the floor plans accuracy, we make no guarantee, warranty or representation as to the accuracy and completeness of the floor plan

Every precaution has been taken to establish accuracy of the information in this brochure but does not constitute any representation by the vendor or agent.

