



## 15/8 Greenknowe Avenue Elizabeth Bay, NSW

1 bed | 1 bath | 1 car

**R&W**

Instantly impressive due to its expansive open feel and vast elevated vistas, this oversized apartment defines Elizabeth Bay living. The free flowing design seamlessly connects each space, while spilling onto a full width terrace overlooking the leafy streetscape beyond.

Benefit from access to an onsite concierge, undercover swimming pool and gymnasium within the complex or step outside to the buzzing attractions of Potts Point just metres from your front door.

- Oversized layout exudes an understated elegance...

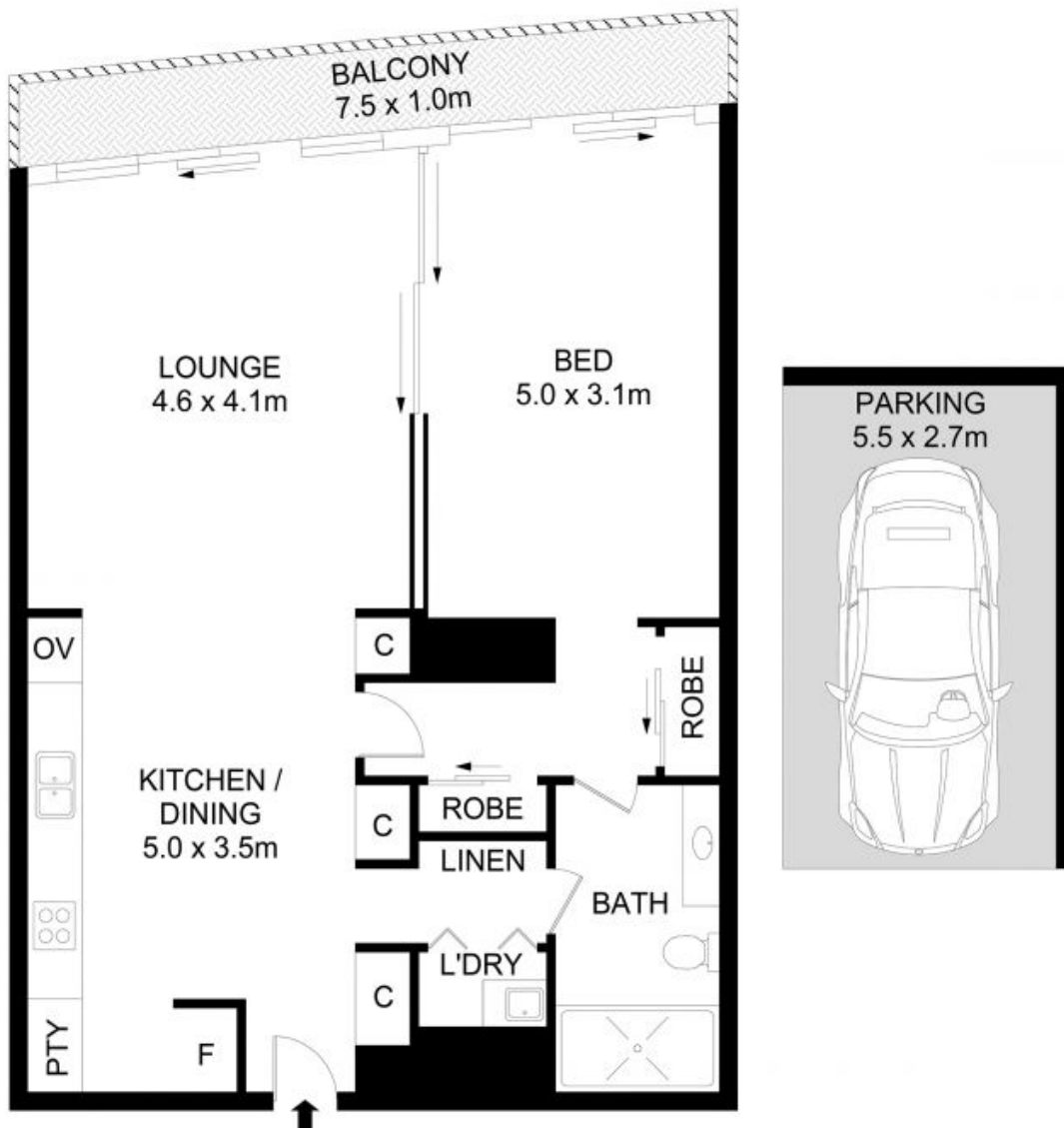
[rwebay.com.au/7897509](https://rwebay.com.au/7897509)

Greg McKinley 0412 044 822

Joss Reid 0414 662 391

**Proudly Richardson&Wrench**

Richardson & Wrench Elizabeth Bay / Potts Point  
02 8356 2700



## 15/8 Greenknowe Avenue, Elizabeth Bay

### Disclaimer

Floor Plan measurements are approximate and are for illustrative purposes only. While we cannot doubt the floor plans accuracy, we make no guarantee, warranty or representation as to the accuracy and completeness of the floor plan.