



11/13 Springfield Avenue Potts Point, NSW

2 bed | 1 bath

A calming place to relax and unwind, this inviting apartment presents a wonderfully flexible floorplan that could cater to a range of demographics.

From the generous living area and tranquil green vistas, to the versatile sunroom that could convert as a nursery or office off the master, the property is a rare find.

- Dark Japanned style timber floors add a chic aesthetic
- High ceilings and oversized windows enhance space

Outgoings (approx.)...

R&W

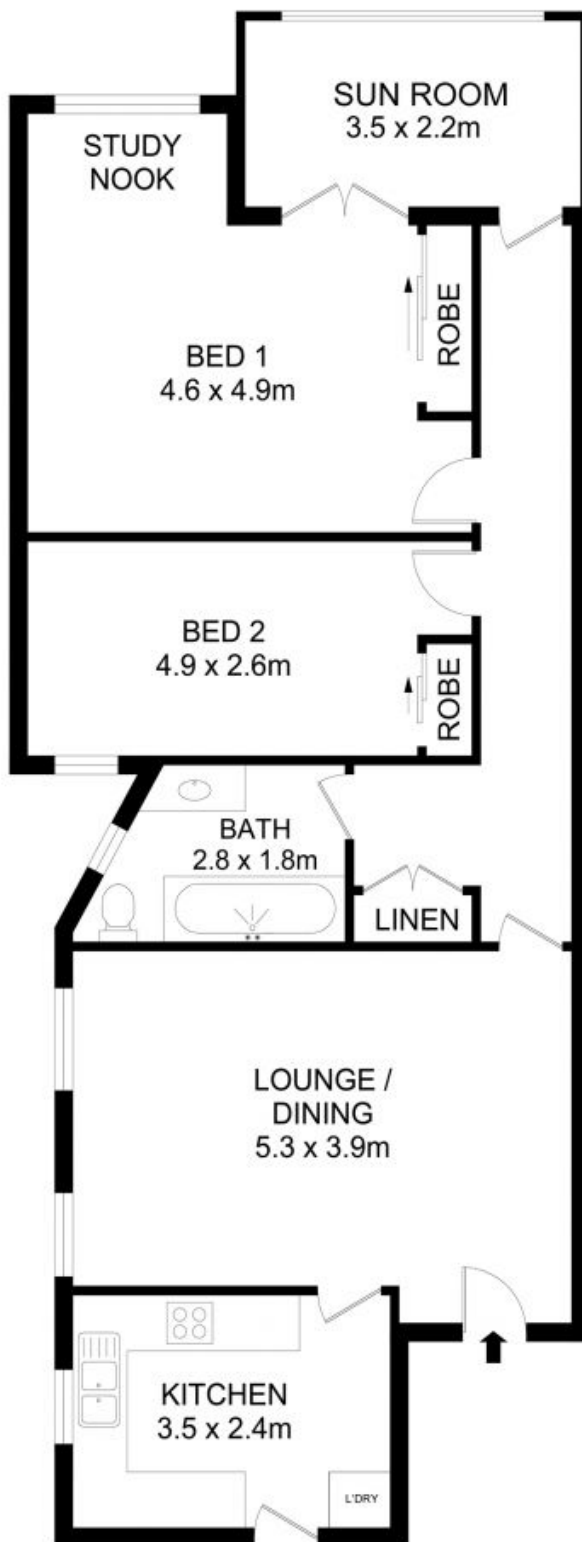
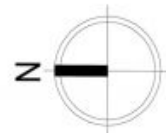
rwebay.com.au/7897510

Greg McKinley 0412 044 822

Andrew Hoggett 0412 208 614

Proudly Richardson&Wrench

Richardson & Wrench Elizabeth Bay / Potts Point
02 8356 2700



11/13 Springfield Avenue, Potts Point



Disclaimer

Floor Plan measurements are approximate and are for illustrative purposes only. While we cannot doubt the floor plans accuracy, we make no guarantee, warranty or representation as to the accuracy and completeness of the floor plan.

Every precaution has been taken to establish accuracy of the information in this brochure but does not constitute any representation by the vendor or agent.

R&W