



14/8 Macleay Street Potts Point, NSW

1 bed | 1 bath | 1 car

Striking views across the yacht studded harbour and a quiet calming atmosphere make this lovely apartment a superb purchase opportunity. The cleverly configured floorplan has been carefully maintained ensuring it's readymade to move in or lease out now.

Perfect for a first home buyer, investor, couple or professional, the property's premier Macleay Street address entices with a cosmopolitan lifestyle of convenience right at your fingertips.

Outgoings (approx.)...

R&W

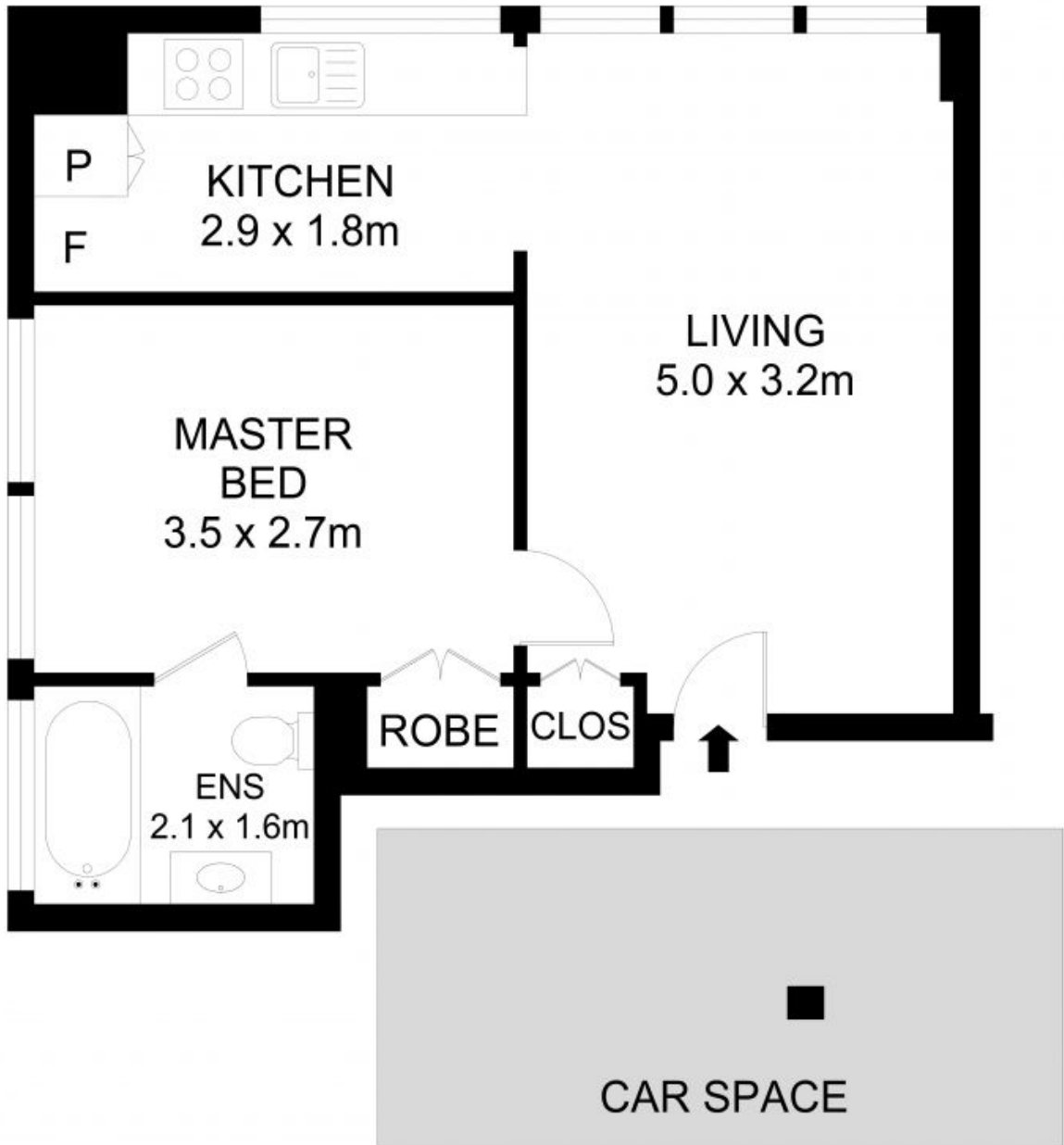
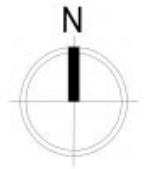
[rwebay.com.au/7897511](https://www.rwebay.com.au/7897511)

Greg McKinley 0412 044 822

Andrew Hoggett 0412 208 614

Proudly Richardson&Wrench

Richardson & Wrench Elizabeth Bay / Potts Point
02 8356 2700



14/8 Macleay Street, Potts Point

Disclaimer

Floor Plan measurements are approximate and are for illustrative purposes only. While we cannot doubt the floor plans accuracy, we make no guarantee, warranty or representation as to the accuracy and completeness of the floor plan.

Every precaution has been taken to establish accuracy of the information in this brochure but does not constitute any representation by the vendor or agent.