



26/20-22 Springfield Avenue Potts Point, NSW

1 bed | 1 bath

R&W

Embrace the allure of Art Deco living in this meticulously crafted one-bedroom apartment. Immerse yourself in the perfect blend of classic charm and modern luxury. Located on level 3 of the Sandringham building, the abundance of natural light in this North facing apartment is framed by bespoke black steel and glass arched wall, highlighting the exquisite features of the Art Deco era.

Every detail has been carefully curated for both style ...

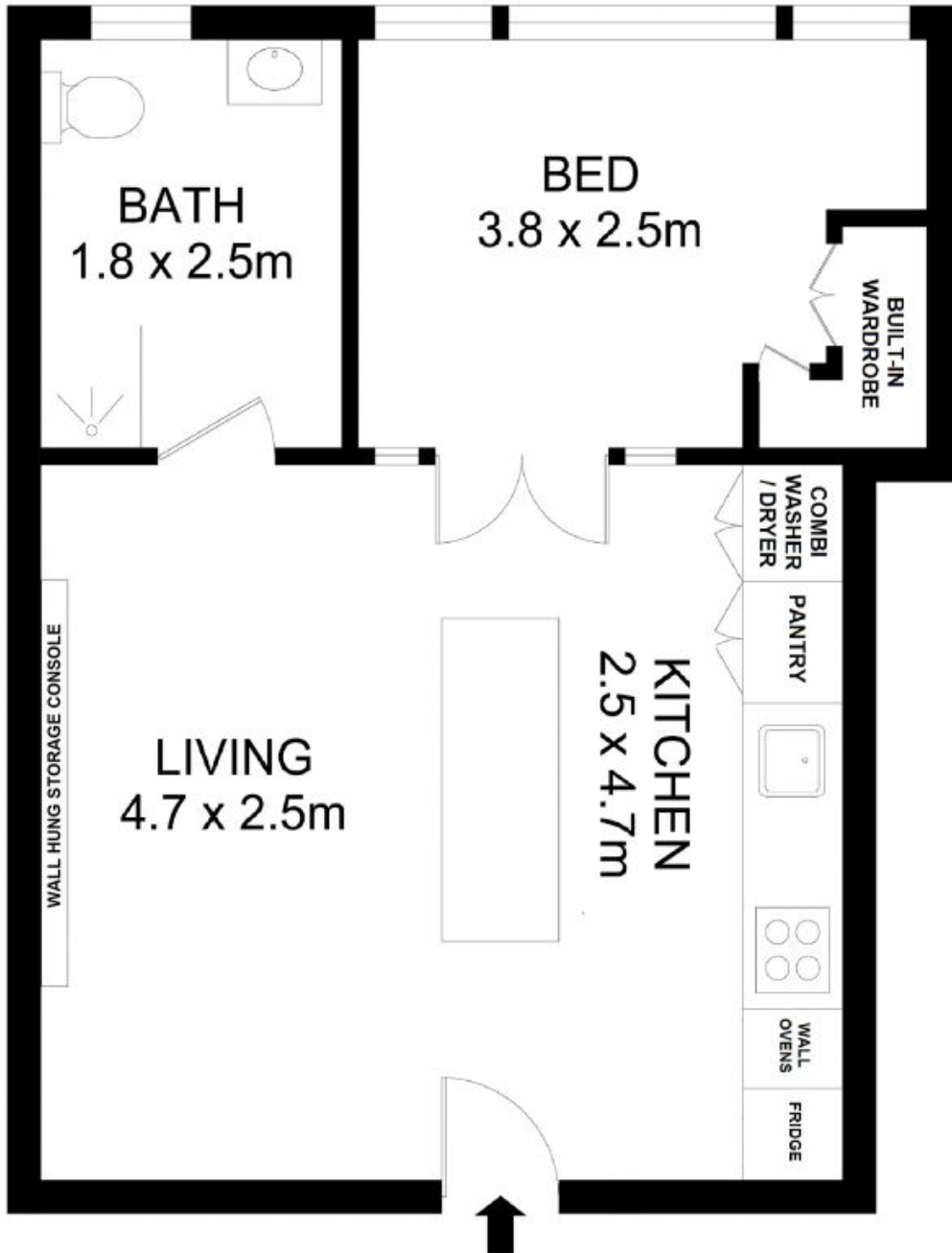
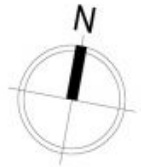
[rwebay.com.au/7898571](https://www.rwebay.com.au/7898571)

Penny Timothy 0418 546 500

Luke McDonnell 0418 844 110

Proudly Richardson&Wrench

Richardson & Wrench Elizabeth Bay / Potts Point
02 8356 2700



26/20 Springfield Avenue, Potts Point

Disclaimer

Floor Plan measurements are approximate and are for illustrative purposes only. While we cannot doubt the floor plans accuracy, we make no guarantee, warranty or representation as to the accuracy and completeness of the floor plan

Every precaution has been taken to establish accuracy of the information in this brochure but does not constitute any representation by the vendor or agent.

