



18/97-99 Macleay Street Potts Point, NSW

3 bed | 1 bath

- Beautiful and iconic 1928 Art Deco building
- Lovely 'semi-like' layout, peaceful + private
- 2 light-filled bedrooms with b/ins, N-facing
- Terrace w/ views to Bridge, Opera House, CBD
- Perfect for al fresco dining, bathed in sunlight
- Terrace access from kitchen, study + living
- Kitchen w/ stone benches, Smeg d/washer
- Neat bathroom, window shutters, oil heating
- Common roof terrace w/ spectacular views

R&W

Auction Thursday, 6th June 6:00 - On Site

Open Saturday, 18th May 2024 12:15 - 12:45

[rwebay.com.au/7900493](https://www.rwebay.com.au/7900493)

Jason Boon 0418 671 494

Geoff Cox 0418 231 004

Joss Reid 0414 662 391

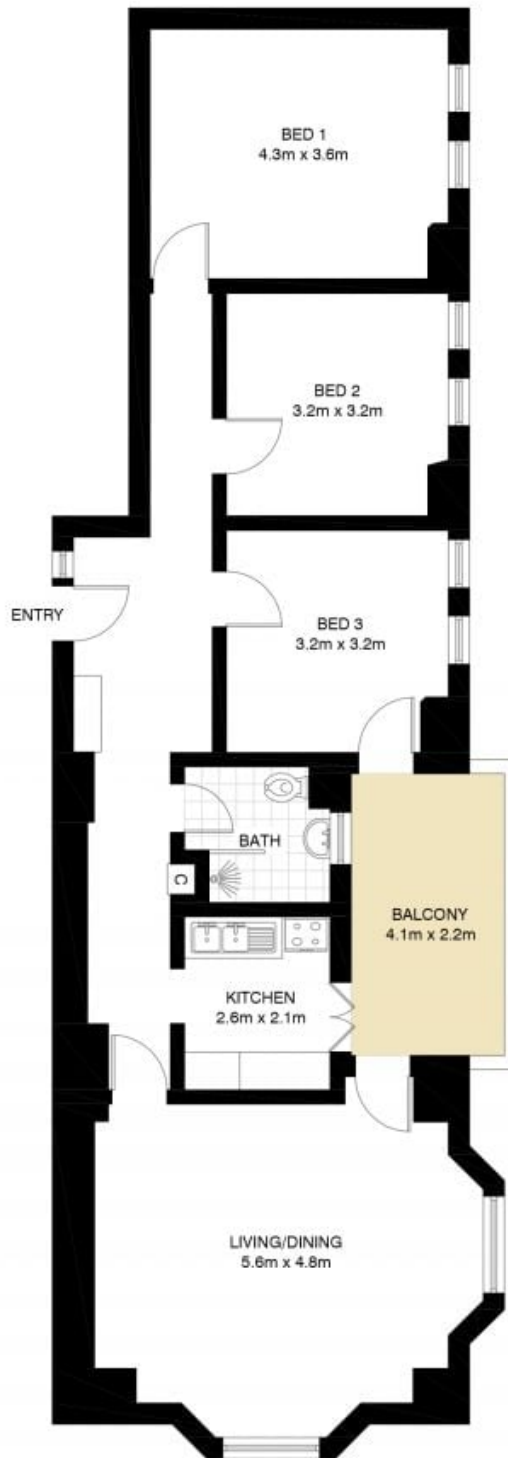
Proudly Richardson & Wrench

Richardson & Wrench Elizabeth Bay / Potts Point
02 8356 2700



R&W

Elizabeth Bay / Potts Point
8356 2700



POTTS POINT
18/97-99 MACLEAY STREET

*PLANS SHOWN ONLY INDICATIVE OF LAYOUT. DIMENSIONS ARE APPROXIMATE.

Floor plan supplied by V-Mark Design Pty Ltd. This floor plan is provided for indicative purposes only.

Measurements are approximate and not to scale. The vendor, agency and supplier will accept no liability for its accuracy. Interested parties are advised to make their own independent enquiries.

Every precaution has been taken to establish accuracy of the information in this brochure but does not constitute any representation by the vendor or agent.

R&W