



21/23 Billyard Avenue Elizabeth Bay, NSW

1 bed | 1 bath | 2 car

R&W

- Top floor 1-bed Deco home w/ mod. update
- Impeccably kept security block, 'Somerset'
- Leafy outlook, opposite iconic 'Boomerang'
- Fresh painted light-filled interiors, dark f/boards
- Expansive open plan kitchen/living/dining zone
- Chef's kitchen, slab marble island/breakfast bar
- Featuring Smeg gas cooking, Miele dishwasher
- Chic and serene marble/mosaic-tiled bathroom
- Over-sized bedroom, b/ins, sisal floor, ceiling fan

rwebay.com.au/7901567

Jason Boon 0418 671 494

Geoff Cox 0418 231 004

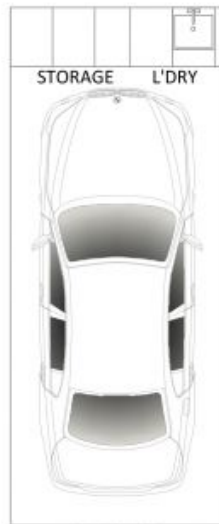
Joss Reid 0414 662 391

Proudly Richardson&Wrench

Richardson & Wrench Elizabeth Bay / Potts Point
02 8356 2700



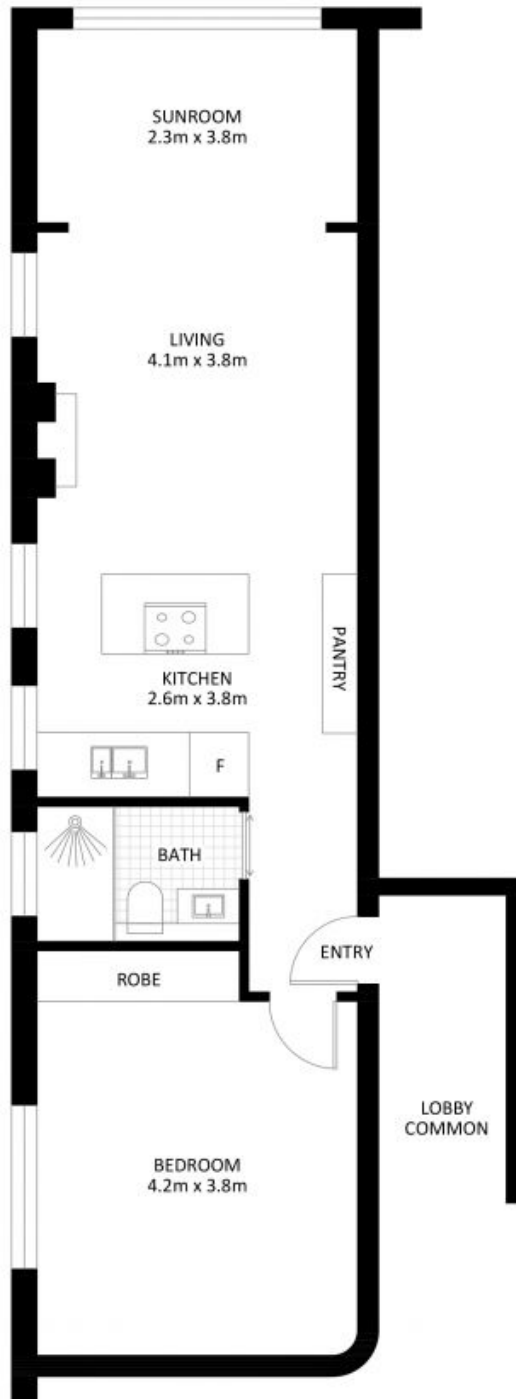
Elizabeth Bay / Potts Point
8356 2700



CAR SPACE
(NOT ACTUAL LOCATION)



CAR SPACE
(NOT ACTUAL LOCATION)



21/23 Billyard Avenue, Elizabeth Bay

*PLANS SHOWN ONLY INDICATIVE OF LAYOUT. DIMENSIONS ARE APPROXIMATE.

Measurements are approximate and not to scale. The vendor, agency and supplier will accept no liability for its accuracy. Interested parties are advised to make their own independent enquiries.

Every precaution has been taken to establish accuracy of the information in this brochure but does not constitute any representation by the vendor or agent.

