



32/68 Sir John Young Crescent Woolloomooloo, NSW

2 bed | 2 bath | 1 car

R&W

Ideally situated between Sydney CBD, Woolloomooloo and Potts Point, this luxurious and boutique apartment exudes warmth with expansive views and a flawless design, accompanied with a rare floor plan, capturing neutral colour schemes and quality finishes throughout.

- Rare single level layout with flowing floor plate
- Floor to ceiling glass sliding doors opening onto full width balcony
- Two designer bathrooms, main with full size separate bath

Lifestyle is at your doorstep, directly opposite the Do...

Open Thursday, 16th May 2024 10:00 - 10:30

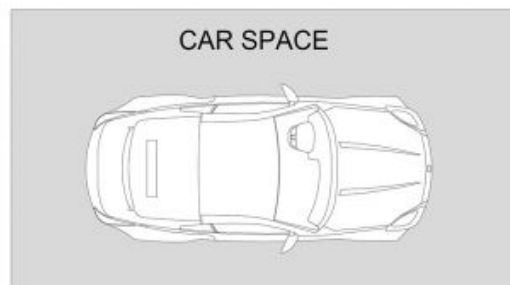
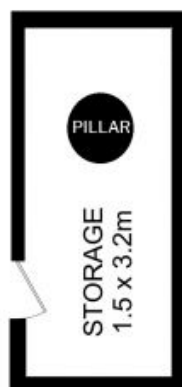
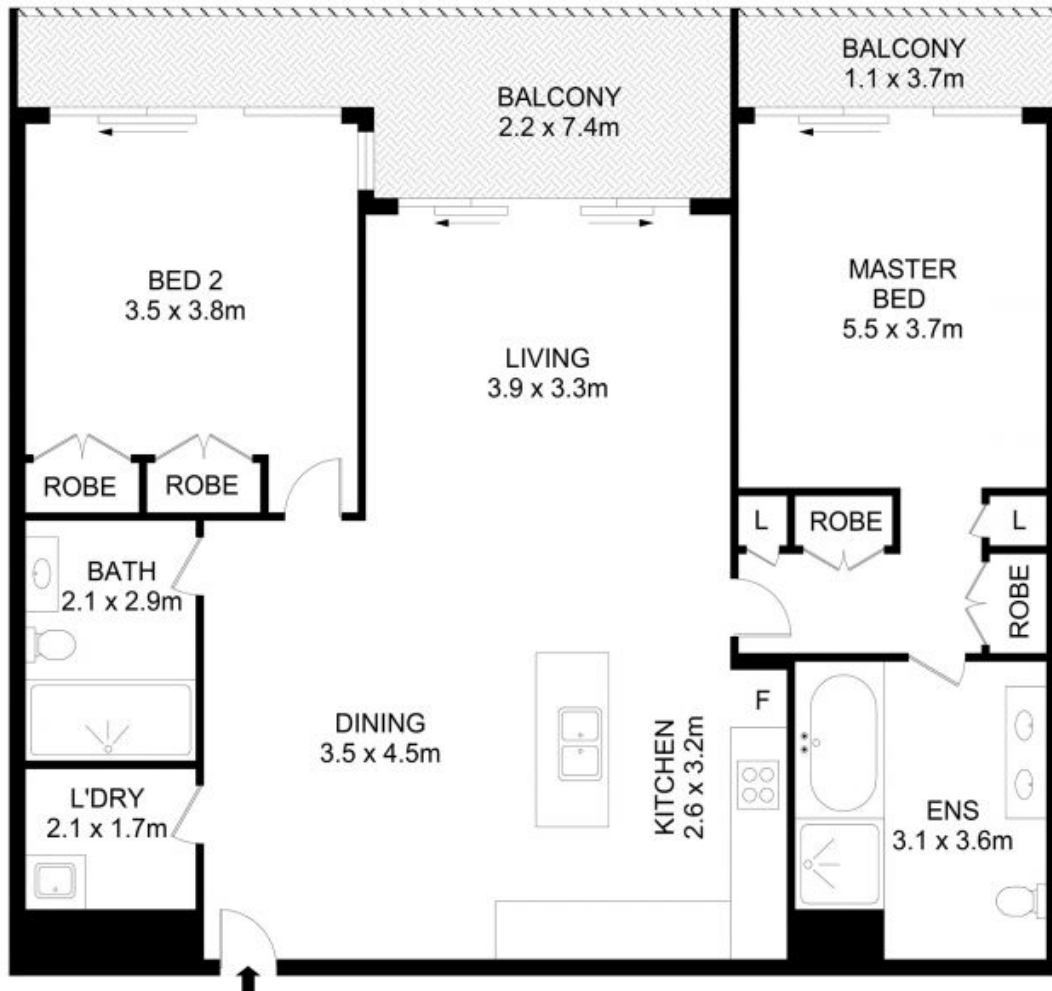
rwebay.com.au/7909120

Angelo Bouras 0401 658 653

Thomas Arthurs 0414 026 412

Proudly Richardson&Wrench

Richardson & Wrench Elizabeth Bay / Potts Point
02 8356 2700



32/68 Sir John Young Crescent, Woolloomooloo

Disclaimer

Floor Plan measurements are approximate and are for illustrative purposes only. While we cannot doubt the floor plans accuracy, we make no guarantee, warranty or representation as to the accuracy and completeness of the floor plan.

Every precaution has been taken to establish accuracy of the information in this brochure but does not constitute any representation by the vendor or agent.

R&W