



## 106/2a Elizabeth Bay Road Elizabeth Bay, NSW

1 bed | 1 bath

**R&W**

This spacious, north-west facing corner apartment is a private retreat in the heart of Elizabeth Bay in the sought-after Gazebo building. This property is perfectly positioned to enjoy cafes, restaurants, shops, and it's only steps away from the vibrant Potts Point lifestyle.

\*Large living/dining space opening onto entertaining terrace creates seamless indoor/outdoor flow

\*Generous bedroom with floor to ceiling glass sliding doors, generous built in wardrobe

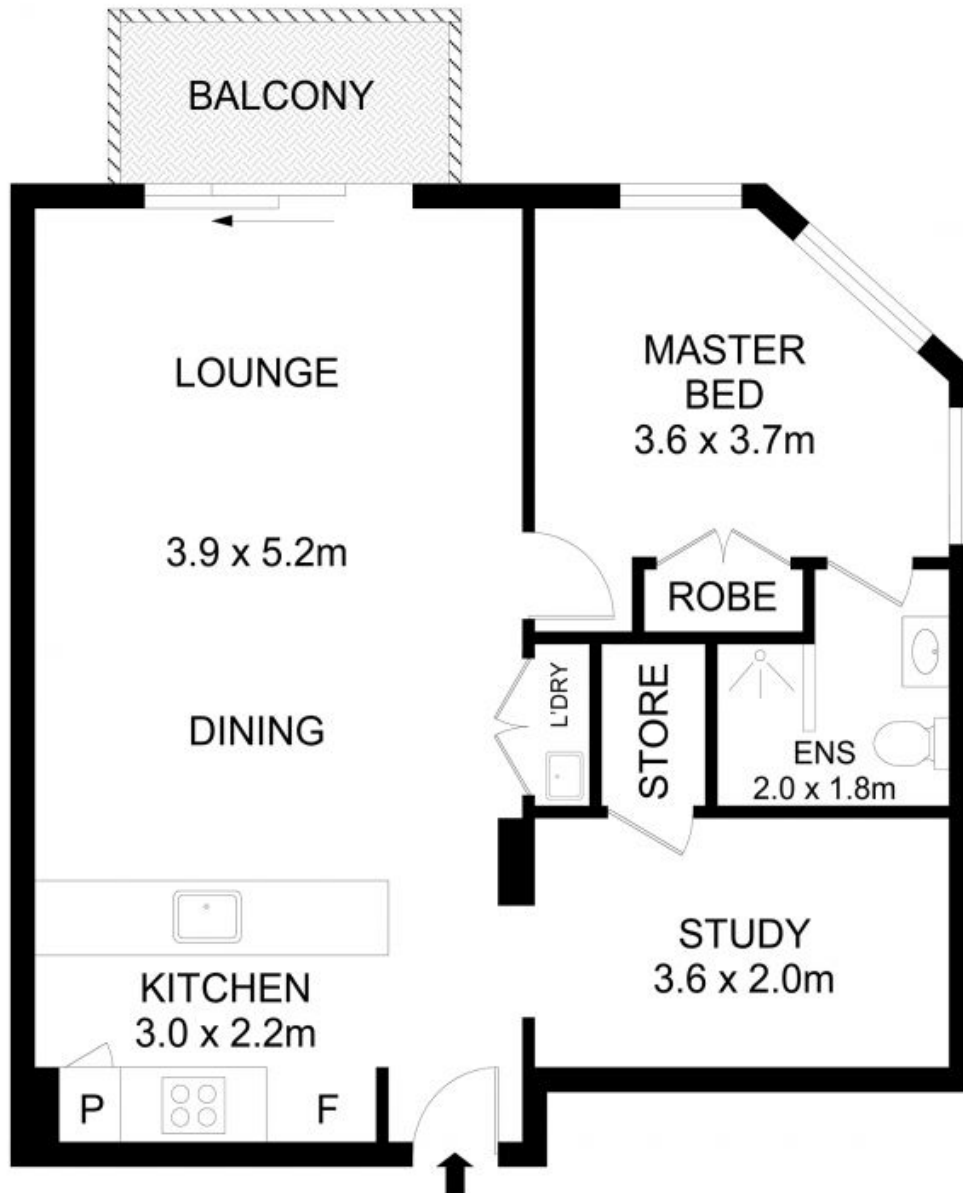
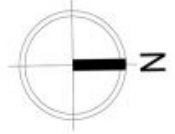
Approximate Outgoings: ...

[rwebay.com.au/7909121](http://rwebay.com.au/7909121)

Angelo Bouras 0401 658 653

**Proudly Richardson&Wrench**

Richardson & Wrench Elizabeth Bay / Potts Point  
02 8356 2700



## 106/2A Elizabeth Bay Road, Elizabeth Bay

### Disclaimer

Floor Plan measurements are approximate and are for illustrative purposes only. While we cannot doubt the floor plans accuracy, we make no guarantee, warranty or representation as to the accuracy and completeness of the floor plan.