



11/8A Wylde Street Potts Point, NSW

3 bed | 2 bath | 1 car

Nestled into the lush tiered greenery of the tightly-held and architecturally significant 'Wyldefel Gardens' complex at the Parisian end of Potts Point, this stunning art-deco apartment has been thoughtfully updated, maintaining immense period charm without compromising on modern comfort. This secluded oasis is just moments from some of Sydney's best restaurants, and minutes from the CBD and the harbourfront. Included on a second title is a car space with access to a generous communal rooftop garden and BBQ area boasting spectacular panoramic harbour views.

- Three luminous bedrooms with plantation shutters, two...

R&W

[rwebay.com.au/7909722](https://www.rwebay.com.au/7909722)

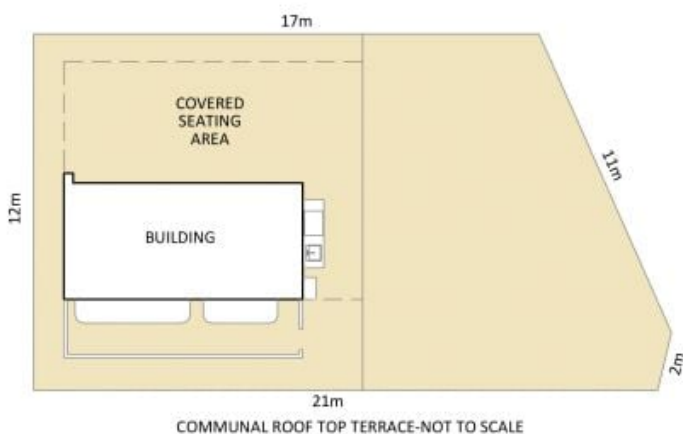
Jason Boon 0418 671 494

Geoff Cox 0418 231 004

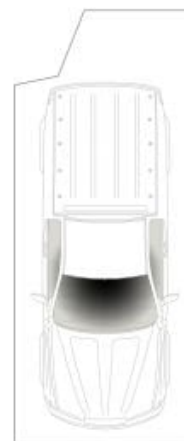
Joss Reid 0414 662 391

Proudly Richardson&Wrench

Richardson & Wrench Elizabeth Bay / Potts Point
02 8356 2700



COMMUNAL ROOF TOP TERRACE-NOT TO SCALE



CAR SPACE
5.8m x 2.4m
(NOT ACTUAL LOCATION)

11/8a Wylde Street, Elizabeth Bay

*PLANS SHOWN ONLY INDICATIVE OF LAYOUT. DIMENSIONS ARE APPROXIMATE.

Measurements are approximate and not to scale. The vendor, agency and supplier will accept no liability for its accuracy. Interested parties are advised to make their own independent enquiries.

