



10/103 Cathedral Street Woolloomooloo, NSW

1 bed | 1 bath

R&W

This light-filled apartment situated in a tranquil tree-lined street, located on the 1st floor of a three-story character building, and offers a walk-to-everything lifestyle within footsteps of cafes, restaurants, and supermarkets, and within walking distance to the CBD.

- Northern aspect from living room
- Common roof top with laundry & bike storeroom
- Oversized fully tiled ensuite bathroom
- Open-plan kitchen & living area with separate bedroom.

Approximate outgoings:...

[rwebay.com.au/7910742](https://www.rwebay.com.au/7910742)

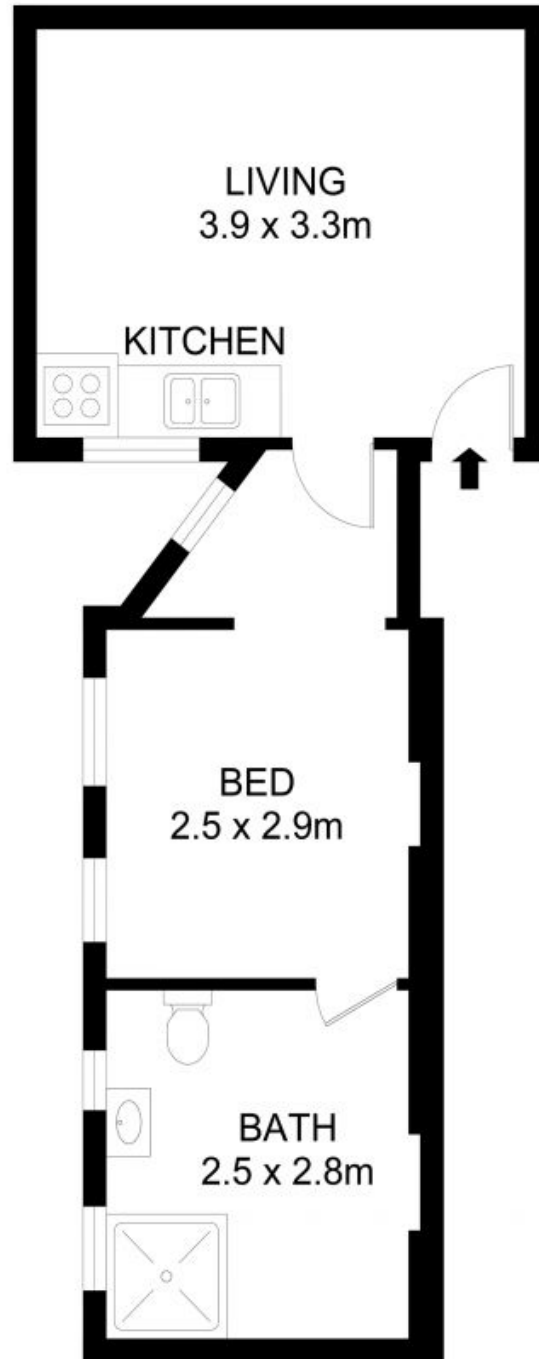
Luke McDonnell 0418 844 110

Penny Timothy 0418 546 500

Greg McKinley 0412 044 822

Proudly Richardson&Wrench

Richardson & Wrench Elizabeth Bay / Potts Point
02 8356 2700



10/103 Cathedral Street, Woolloomooloo

Disclaimer

Floor Plan measurements are approximate and are for illustrative purposes only. While we cannot doubt the floor plans accuracy, we make no guarantee, warranty or representation as to the accuracy and completeness of the floor plan.

Every precaution has been taken to establish accuracy of the information in this brochure but does not constitute any representation by the vendor or agent.

R&W