



**706/46-50 Burton Street Darlinghurst, NSW**

**3 bed | 2 bath | 3 car**

**R&W**

Set in the esteemed BKH-designed Republic 2, this 2-lev...

[rwebay.com.au/7915097](http://rwebay.com.au/7915097)

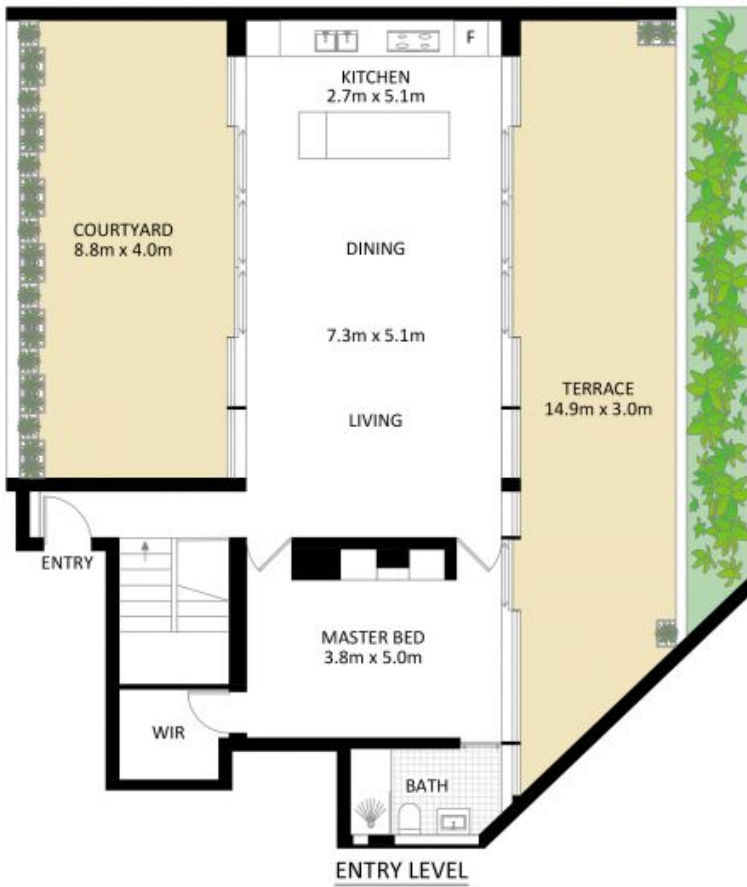
Jason Boon 0418 671 494

Joss Reid 0414 662 391

Geoff Cox 0418 231 004

**Proudly Richardson&Wrench**

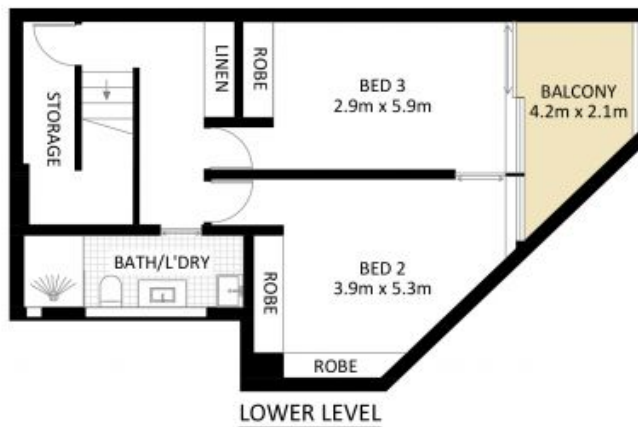
Richardson & Wrench Elizabeth Bay / Potts Point  
02 8356 2700



SECURE TANDEM CAR SPACE (NOT ACTUAL LOCATION)



SECURE CAR SPACE (NOT ACTUAL LOCATION)



## 706/46-50 Burton Street, Darlinghurst

\*PLANS SHOWN ONLY INDICATIVE OF LAYOUT. DIMENSIONS ARE APPROXIMATE.

Measurements are approximate and not to scale. The vendor, agency and supplier will accept no liability for its accuracy. Interested parties are advised to make their own independent enquiries.

