



## 3/18-18A Macleay Street Potts Point, NSW

2 bed | 2 bath | 1 car

Set in one of Potts Point's most prestigious buildings, 'Villard' designed by Ercole Pallazzetti, this beautiful residence embodies fashionable inner city living.

It flows across an impressive 153sqm of internal and external space that captures illuminating East facing light and subtle harbour vistas.

- Bright open design connects outdoors for easy living and entertaining

Outgoings (approx.)...

**R&W**

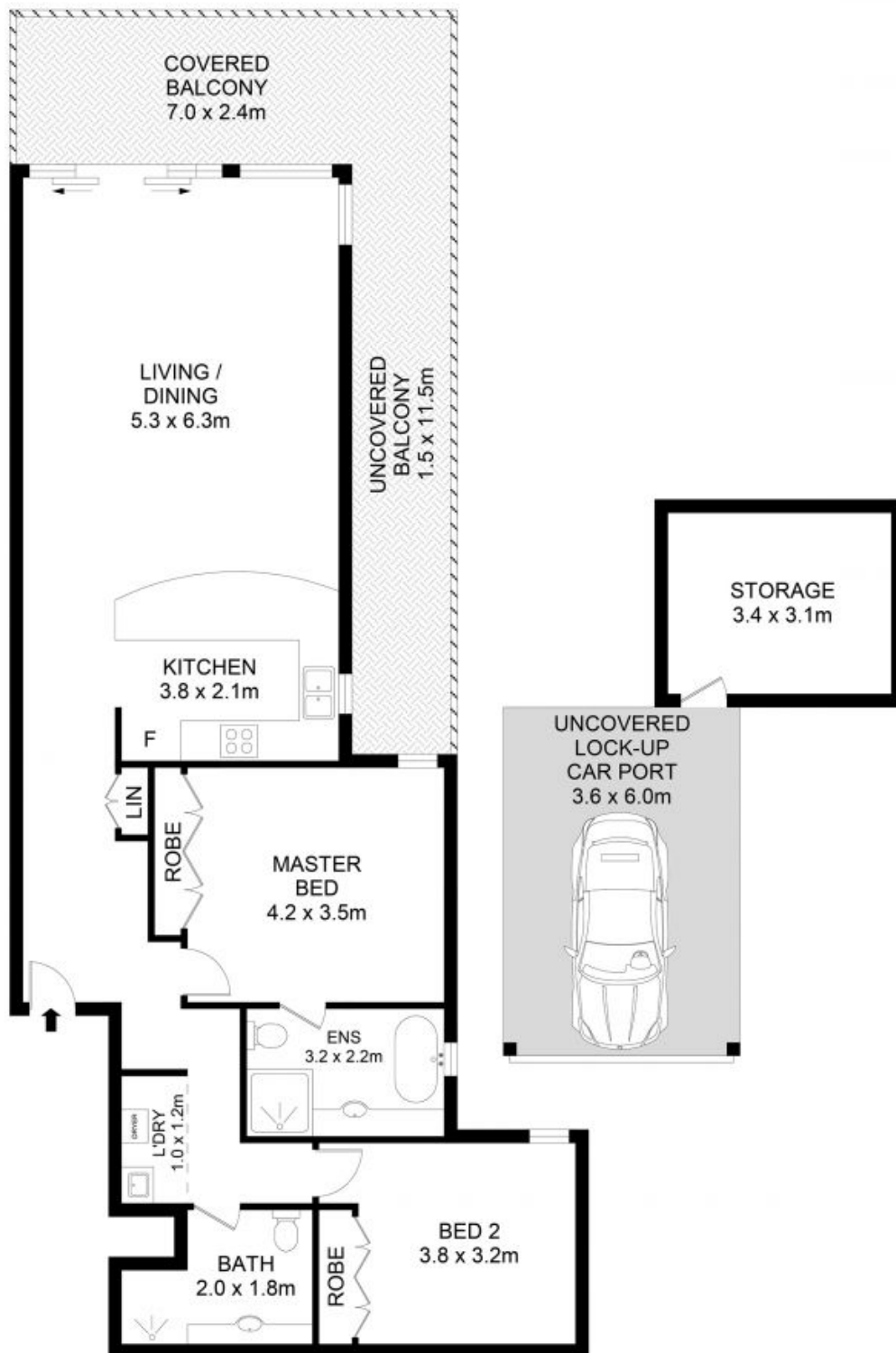
**[rwebay.com.au/7918294](https://www.rwebay.com.au/7918294)**

Greg McKinley 0412 044 822

Andrew Hoggett 0412 208 614

**Proudly Richardson&Wrench**

Richardson & Wrench Elizabeth Bay / Potts Point  
02 8356 2700



## 3/18 Macleay Street, Potts Point

### Disclaimer

Floor Plan measurements are approximate and are for illustrative purposes only. While we cannot doubt the floor plans accuracy, we make no guarantee, warranty or representation as to the accuracy and completeness of the floor plan.