



## 605/145 Victoria Street Potts Point, NSW

| 1 bath | 1 car

**R&W**

This well-presented studio apartment sets the scene for a cosmopolitan urban village lifestyle. Featuring level lift access to secure undercover parking and a common outdoor pool, this low-maintenance city pad is an ideal investment or pied-a-terre in an unbeatable location just 300m to Kings Cross station.

\*Secure block with lift access from the street and secure parking

\*Views transform into a dazzling light show by night

\*Excellent layout with a breakfast bar and full length windows

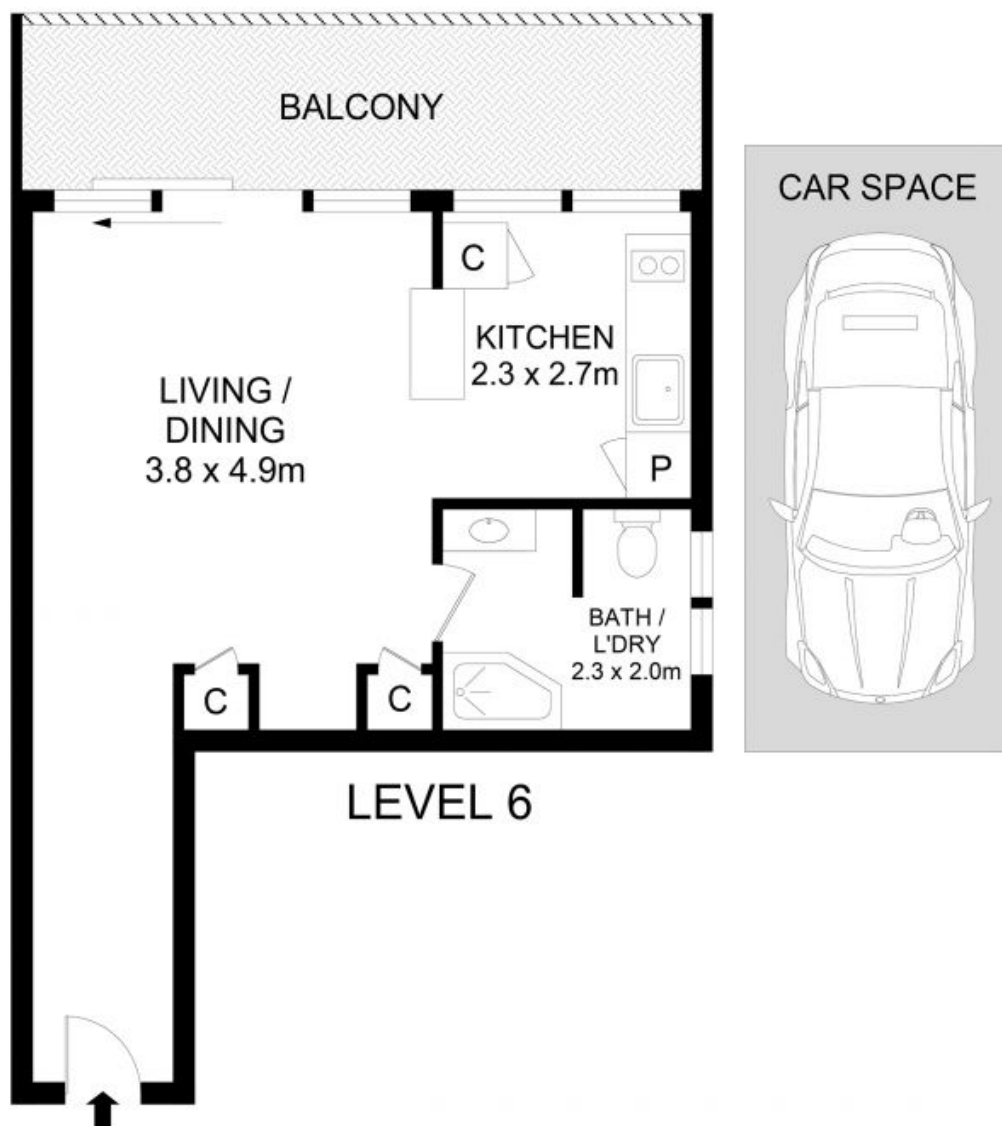
Approx Outgoings: ...

**[rwebay.com.au/7918325](https://www.rwebay.com.au/7918325)**

Angelo Bouras 0401 658 653

**Proudly Richardson&Wrench**

Richardson & Wrench Elizabeth Bay / Potts Point  
02 8356 2700



605/145 Victoria Street, Potts Point

**Disclaimer**

Floor Plan measurements are approximate and are for illustrative purposes only. While we cannot doubt the floor plans accuracy, we make no guarantee, warranty or representation as to the accuracy and completeness of the floor plan.

Every precaution has been taken to establish accuracy of the information in this brochure but does not constitute any representation by the vendor or agent.

**R&W**