



702/2 Elizabeth Bay Road Elizabeth Bay, NSW

1 bed | 1 bath | 1 car

R&W

This beautifully sun-lit modern one bedroom oasis in the iconic and tightly held Gazebo tower building is sure to impress. Superbly located in the heart of Elizabeth Bay, within close proximity to the CBD and only moments to shops, delis, cafes, farmers markets, bars, restaurants, supermarkets, transport, harbour side parks and more - everything you could want to suit your lifestyle, right at your doorstep.

*Sunny north-east aspect with harbour views

*Large open plan kitchen, living and dining

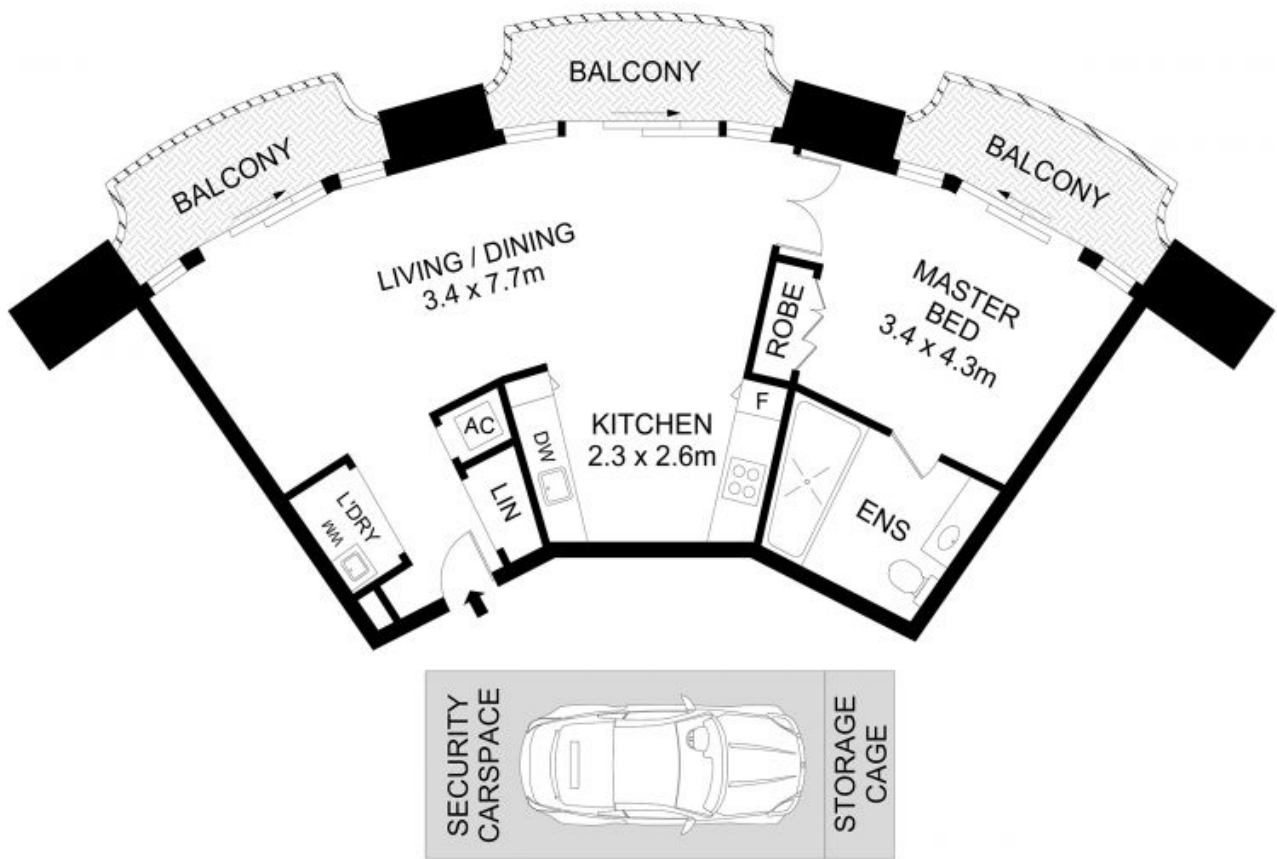
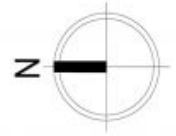
Approximate outgoings:...

rwebay.com.au/7918326

Angelo Bouras 0401 658 653

Proudly Richardson&Wrench

Richardson & Wrench Elizabeth Bay / Potts Point
02 8356 2700



702/2 Elizabeth Bay Road, Elizabeth Bay



Disclaimer

Floor Plan measurements are approximate and are for illustrative purposes only. While we cannot doubt the floor plans accuracy, we make no guarantee, warranty or representation as to the accuracy and completeness of the floor plan.

Every precaution has been taken to establish accuracy of the information in this brochure but does not constitute any representation by the vendor or agent.

R&W