



1504/21 Elizabeth Bay Road Elizabeth Bay, NSW

3 bed | 2 bath | 2 car

R&W

This sumptuous 2-3 bedroom apartment combines high-end finishes and texture-rich dimension with stunning proportions and panoramic views to present a rare offering in the acclaimed Encore. Occupying a corner position and spanning the entire depth of the 15th floor, the expansive living/dining extends to a wide entertainer's terrace with stunning views out to Rushcutters Bay Marina and beyond. Originally three bedrooms, it has been reimagined to maximise the living space with a beautiful home office/library alcove.

Soft grey carpet contrasts with the warm glow of bespoke...

rwebay.com.au/7930615

Jason Boon 0418 671 494

Geoff Cox 0418 231 004

Joss Reid 0414 662 391

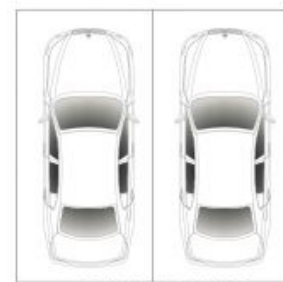
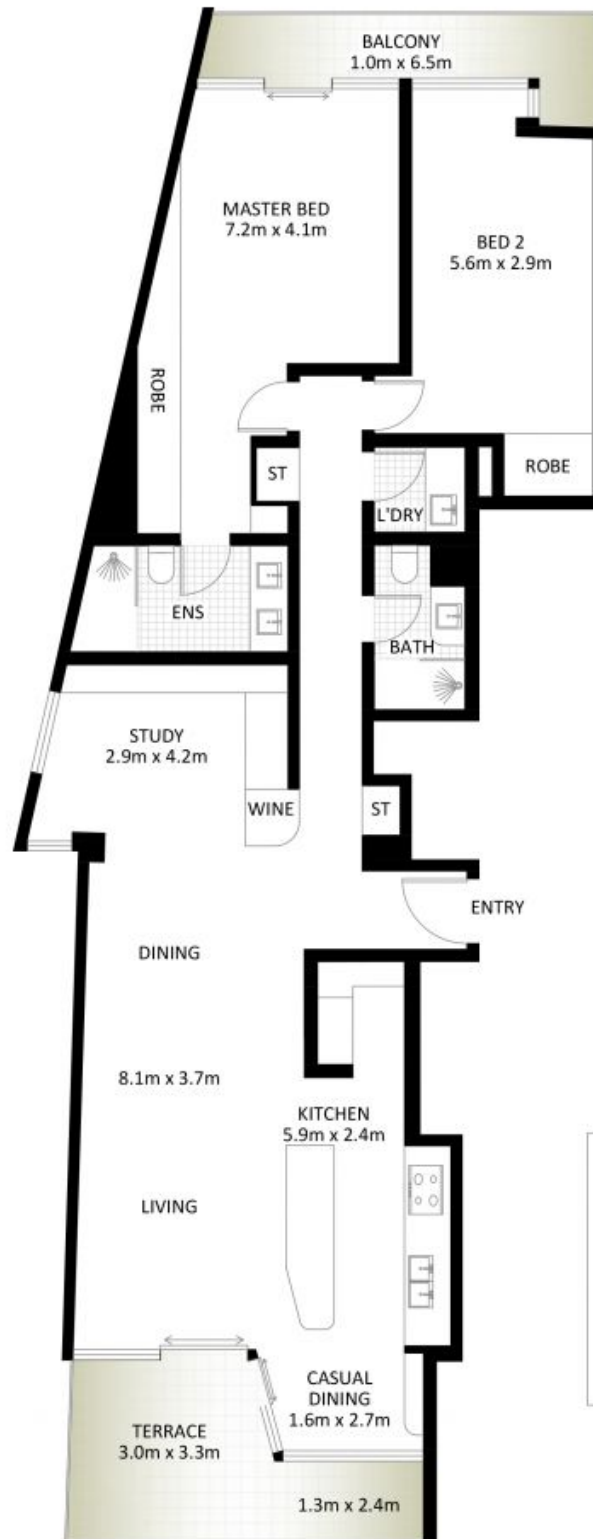
Proudly Richardson&Wrench

Richardson & Wrench Elizabeth Bay / Potts Point
02 8356 2700



R&W

Elizabeth Bay / Potts Point
8356 2700



SECURE CAR SPACES
(NOT ACTUAL LOCATION)



1504/21 Elizabeth Bay Road, Elizabeth Bay

*PLANS SHOWN ONLY INDICATIVE OF LAYOUT. DIMENSIONS ARE APPROXIMATE.

Measurements are approximate and not to scale. The vendor, agency and supplier will accept no liability for its accuracy. Interested parties are advised to make their own independent enquiries.

Every precaution has been taken to establish accuracy of the information in this brochure but does not constitute any representation by the vendor or agent.

R&W