



## 603/46-48 Riley Street Woolloomooloo, NSW

1 bed | 1 bath

- Chic abode in 'The Riley' warehouse conversion
- Designer NYC-style living in heart of Inner-East
- Wide living/dining area, unique corner position
- Luxurious bedroom featuring ample b/in robes
- Elegant bathroom with excellent mosaic tiling
- Mod. gas kitchen, full suite of Smeg appliances
- Sublime industrial appeal, exposed beams/piping
- Oak floors, high ceilings, metal window frames
- Ducted A/C, int. laundry, full blinds for privacy

Approx Levies: ...

# R&W

[rwebay.com.au/7930769](http://rwebay.com.au/7930769)

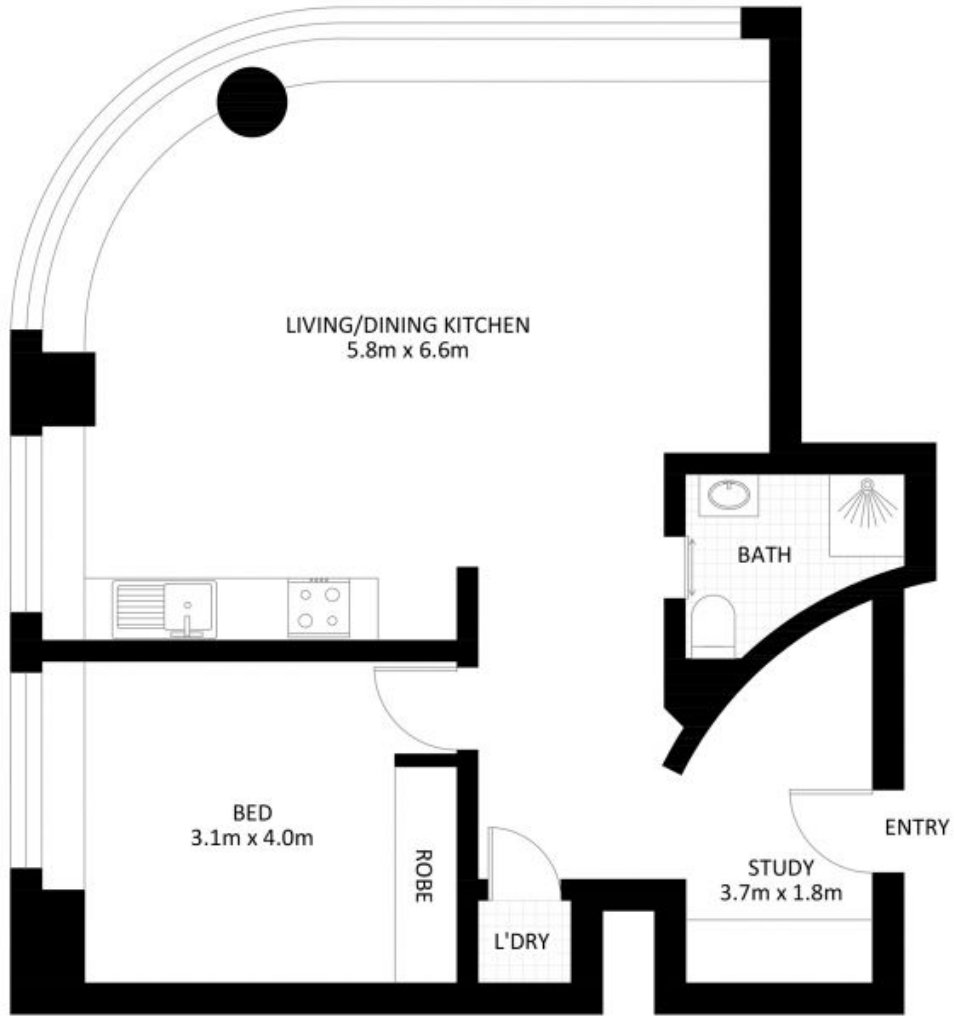
Geoff Cox 0418 231 004

Angelo Bouras 0401 658 653

Joss Reid 0414 662 391

**Proudly Richardson&Wrench**

Richardson & Wrench Elizabeth Bay / Potts Point  
02 8356 2700



603/46 Riley Street, Woolloomooloo



\*PLANS SHOWN ONLY INDICATIVE OF LAYOUT. DIMENSIONS ARE APPROXIMATE.

Measurements are approximate and not to scale. The vendor, agency and supplier will accept no liability for its accuracy. Interested parties are advised to make their own independent enquiries.