



## 14/3 Clement Street Rushcutters Bay, NSW

2 bed | 1 bath | 1 car

Located in a quiet leafy cul-de-sac in close proximity to Rushcutters Bay Park and the harbour. A short distance from the tennis courts, local parks, marinas, public transport and Darlinghurst and Potts Point dining amenities.

\*Designed by award winning Architects Ancher Mortlock & Woolley

\*Strata building in a block of 25

\*Located in a security block with two internal lifts

\*Secure parking with storage cage and visitor parking

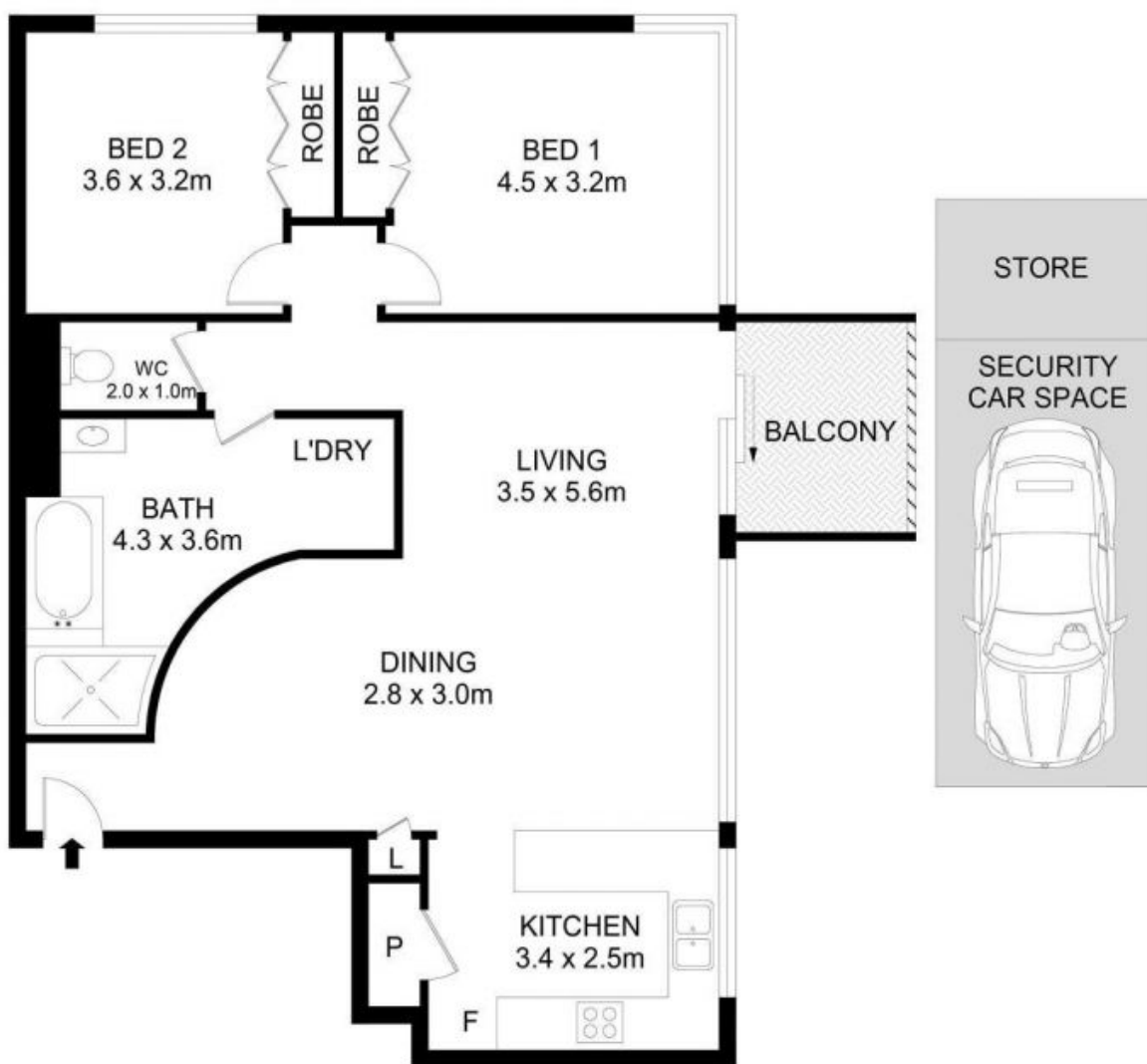
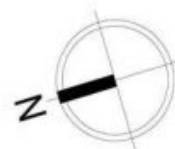
**R&W**

**[rwebay.com.au/7934900](http://rwebay.com.au/7934900)**

Angelo Bouras 0401 658 653

**Proudly Richardson&Wrench**

Richardson & Wrench Elizabeth Bay / Potts Point  
02 8356 2700



## 14/3 Clement Street, Rushcutters Bay