

221/88 Dowling Street Woolloomooloo, NSW

1 bed | 1 bath | 1 car

R&W

Elegant and excellent, this oversized, west facing apartment is the ideal city pad, just seconds from the harbour. Enjoy superb vista's across the CBD to the Harbour Bridge. Set in the much-admired Woolloomooloo Waters complex, it stands as a brilliant investment or perfect executive residence, close to the city.

- Perfectly positioned west facing windows ensuring a sun-drenched balcony & apartment

Approx Levies and Rates:...

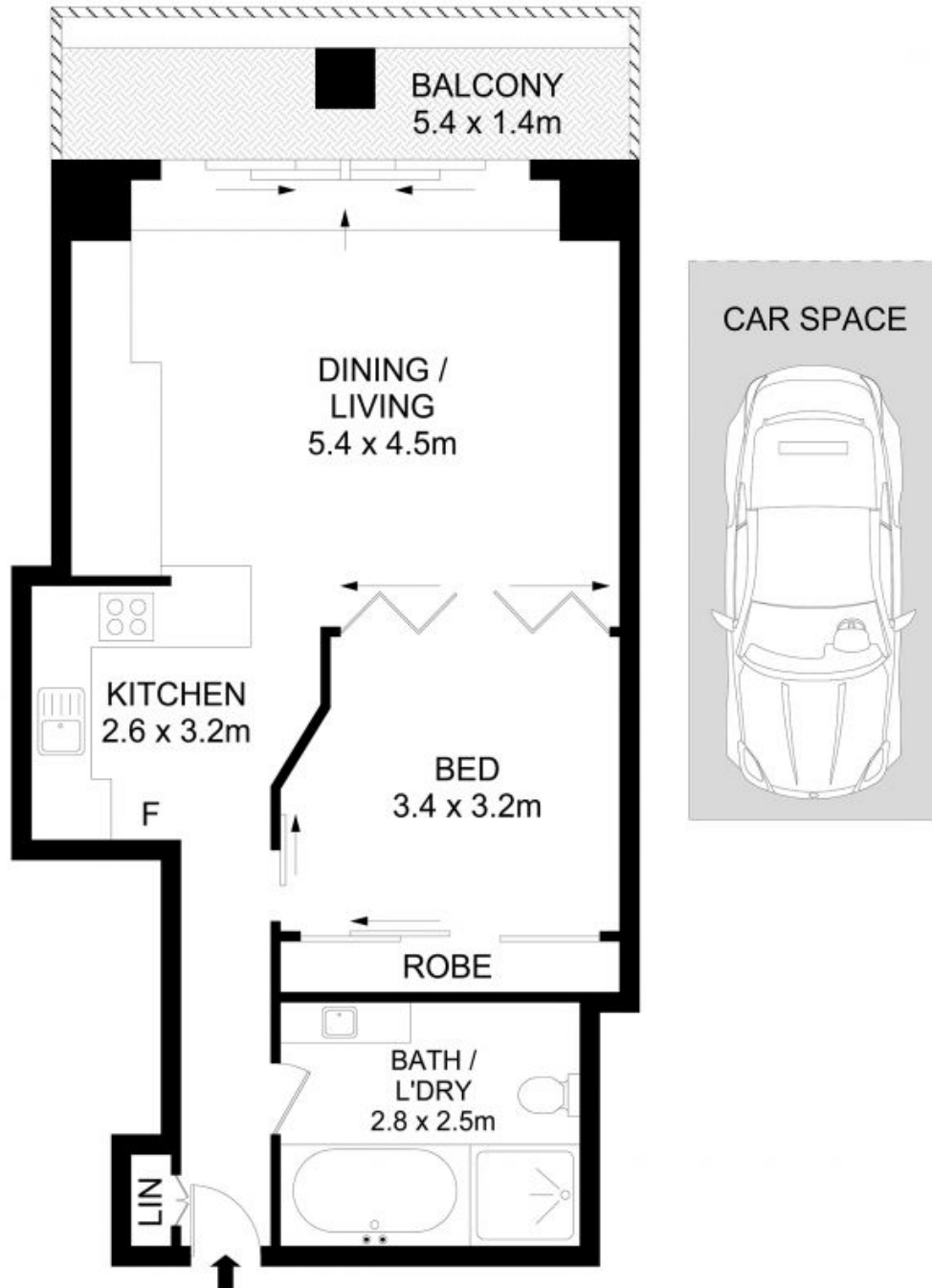
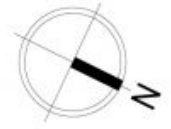
rwebay.com.au/7941240

Angelo Bouras 0401 658 653

Thomas Arthurs 0414 026 412

Proudly Richardson&Wrench

Richardson & Wrench Elizabeth Bay / Potts Point
02 8356 2700



221/88 Dowling Street, Woolloomooloo

Disclaimer

Floor Plan measurements are approximate and are for illustrative purposes only. While we cannot doubt the floor plans accuracy, we make no guarantee, warranty or representation as to the accuracy and completeness of the floor plan

Every precaution has been taken to establish accuracy of the information in this brochure but does not constitute any representation by the vendor or agent.

