



## 503/2 Elizabeth Bay Road Elizabeth Bay, NSW

2 bed | 2 bath | 1 car

**R&W**

Located in the prized Gazebo apartment complex, this beautifully renovated apartment provides the ultimate luxury living in the heart of Elizabeth Bay.

Centrally positioned apartment overlooks Fitzroy Gardens and stunning views to the City and Eastern Suburbs from every room. Positioned high on the fifth floor, it offers open plan living and dining areas that flow seamlessly with plenty of natural light. This high-end, fully renovated apartment is located footsteps from the vibrant hub of Elizabeth Bay and Potts Point where an array of popular restaurants, cafes, and bars await on your doorstep.

...

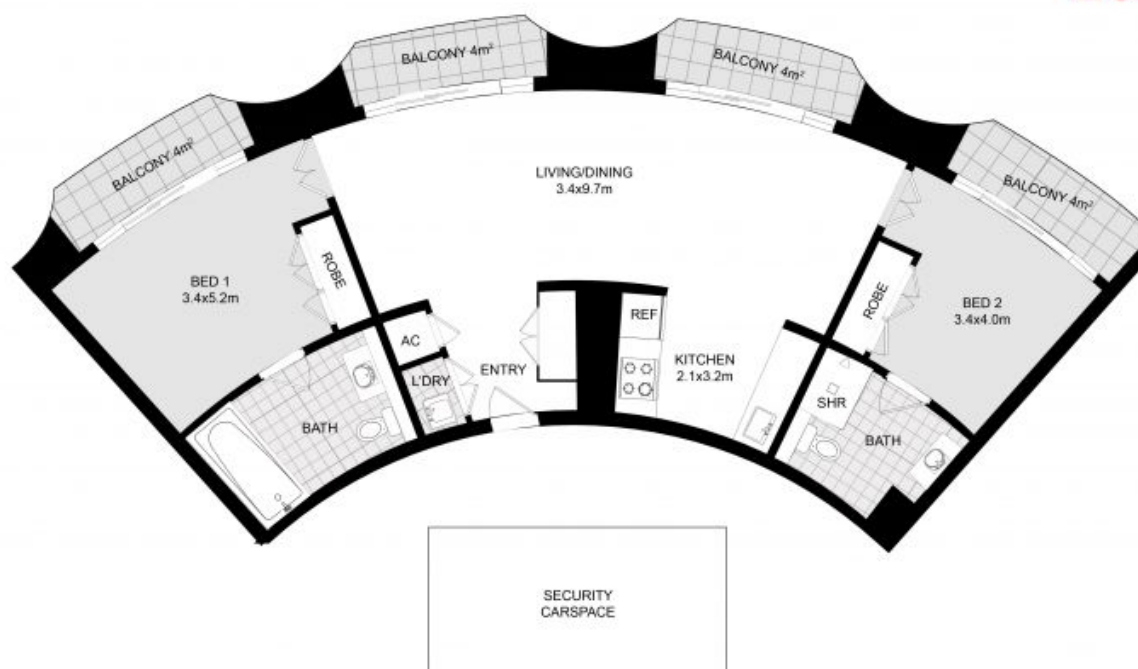
**[rwebay.com.au/7941807](https://rwebay.com.au/7941807)**

Angelo Bouras 0401 658 653

Thomas Arthurs 0414 026 412

**Proudly Richardson&Wrench**

Richardson & Wrench Elizabeth Bay / Potts Point  
02 8356 2700



**FLOOR PLAN**



This floor plan including furniture, fixture measurements and dimensions are approximate and for illustrative purposes only. BoxBrownie.com gives no guarantee, warranty or representation as to the accuracy and layout. All enquiries must be directed to the agent, vendor or party representing this floor plan.

**503/2 Elizabeth Bay Road, Elizabeth Bay, NSW 2011**