



4E/6 Macleay Street Potts Point, NSW

2 bed | 1 bath | 1 car

- Lovely 2-bed haven in super-handly position
- Views to CBD, leafy sunny outlook, priv. parking
- Open-plan living/dining flows to balcony
- Balcony bathed in sun, great for casual dining
- Serene main bed w/ b/ins, flexible-use 2nd bed
- Modern kitchen with Miele cooking, d/washer
- Internal laundry, chic integrated b/in cabinetry
- Security building with intercom and lift access
- Steps to cafes, shopping, stroll to CBD, harbour

R&W

rwebay.com.au/7942269

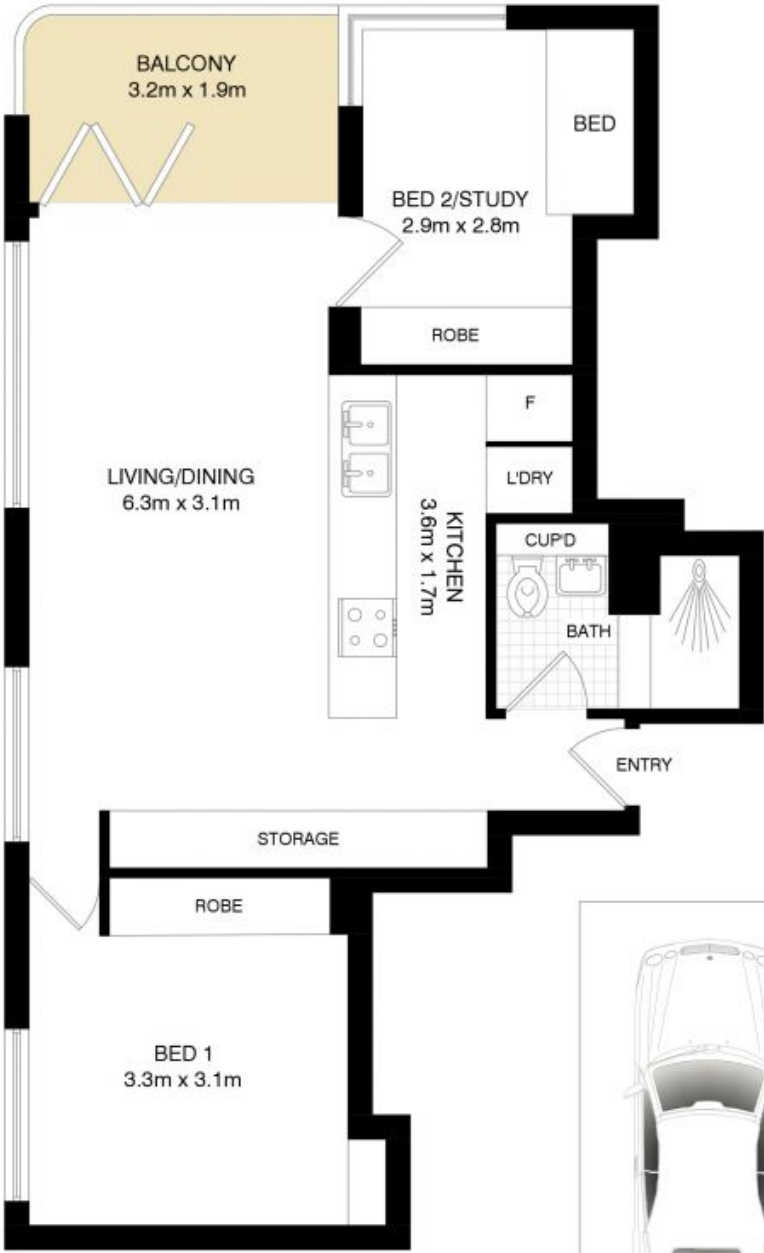
Jason Boon 0418 671 494

Joss Reid 0414 662 391

Geoff Cox 0418 231 004

Proudly Richardson&Wrench

Richardson & Wrench Elizabeth Bay / Potts Point
02 8356 2700



CAR SPACE
(NOT ACTUAL LOCATION)

POTTS POINT
4E/6 MACLEAY STREET



*PLANS SHOWN ONLY INDICATIVE OF LAYOUT. DIMENSIONS ARE APPROXIMATE.
Floor plan supplied by V-Mark Design Pty Ltd. This floor plan is provided for indicative purposes only.
Measurements are approximate and not to scale. The vendor, agency and supplier will accept no liability for its accuracy. Interested parties are advised to make their own independent enquiries.