



18/96 Elizabeth Bay Road Elizabeth Bay, NSW

1 bed | 1 bath

R&W

Nestled in the heart of Sydney's historic charm, this exquisite Art Deco apartment is positioned on the North East of Level 3 of the Ashdown building. Designed in the P&O style by renowned architect Aaron Bolot in 1938, Ashdown is a stunning example of a luxury period building with an elegant wood panelled lift and generous timber balustrades between each level. Apartment 18 offers a rare blend of sophistication and character. Boasting classic architectural features, including high ceilings, ornate cornicing, polished timber floors, and windows on three sides, every corner exudes a sense of style.

...

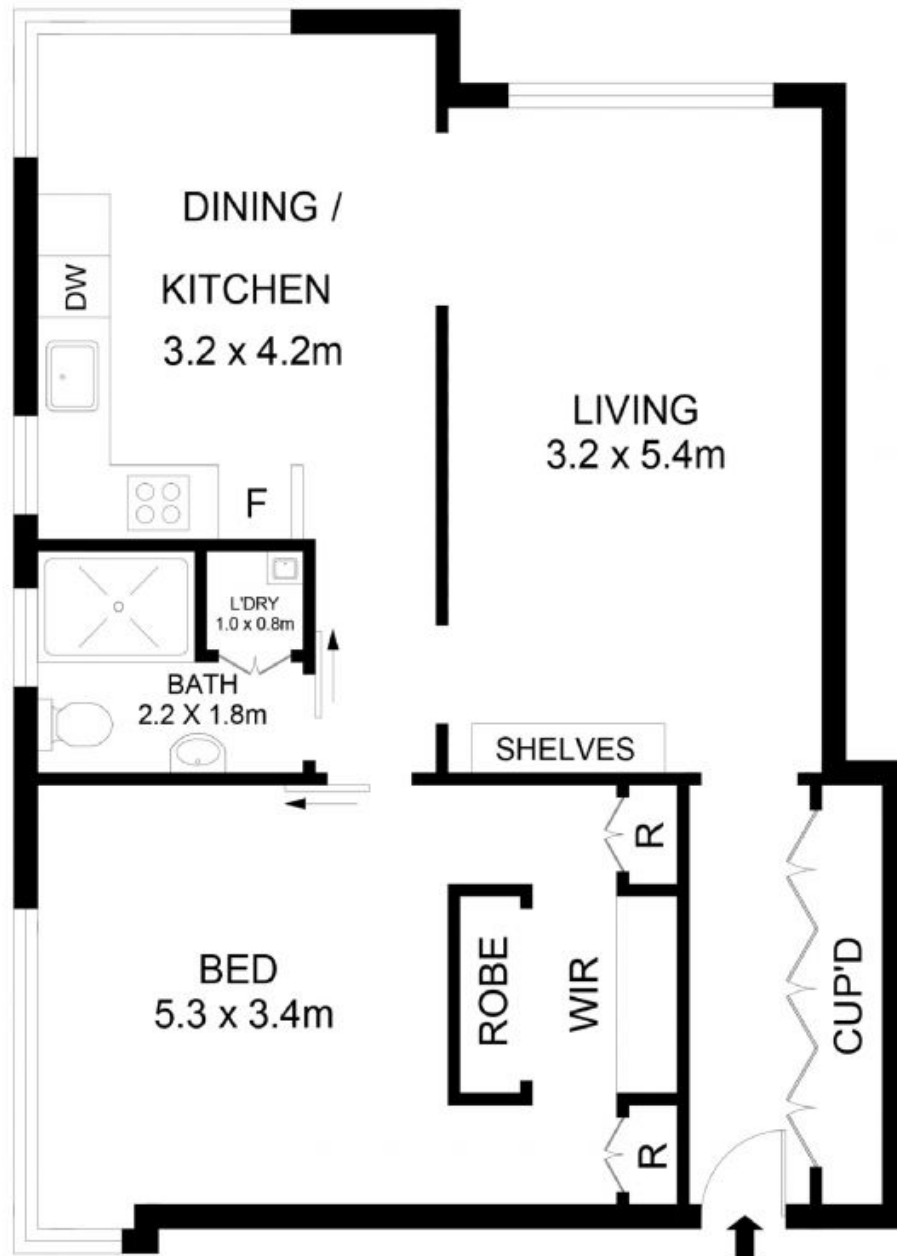
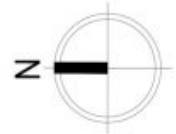
rwebay.com.au/7943045

Penny Timothy 0418 546 500

Luke McDonnell 0418 844 110

Proudly Richardson&Wrench

Richardson & Wrench Elizabeth Bay / Potts Point
02 8356 2700



18/96 Elizabeth Bay Road, Elizabeth Bay

Disclaimer

Floor Plan measurements are approximate and are for illustrative purposes only. While we cannot doubt the floor plans accuracy, we make no guarantee, warranty or representation as to the accuracy and completeness of the floor plan.

Every precaution has been taken to establish accuracy of the information in this brochure but does not constitute any representation by the vendor or agent.

