



## 36/20-22 Springfield Avenue Potts Point, NSW

| 1 bath

Set in the charming Art Deco building "Sandringham" this oversized approximately 36m2 strata title studio apartment has fabulous light and space and is larger than many one-bedroom apartments.

Boasting high ceilings, large built-in wardrobe and wall to wall sliding windows, the original Art Deco features of this apartment make it a unique offering.

Located in a quiet tree lined street with the advantage...

# R&W

Open Thursday, 23rd May 2024 10:00 - 10:30

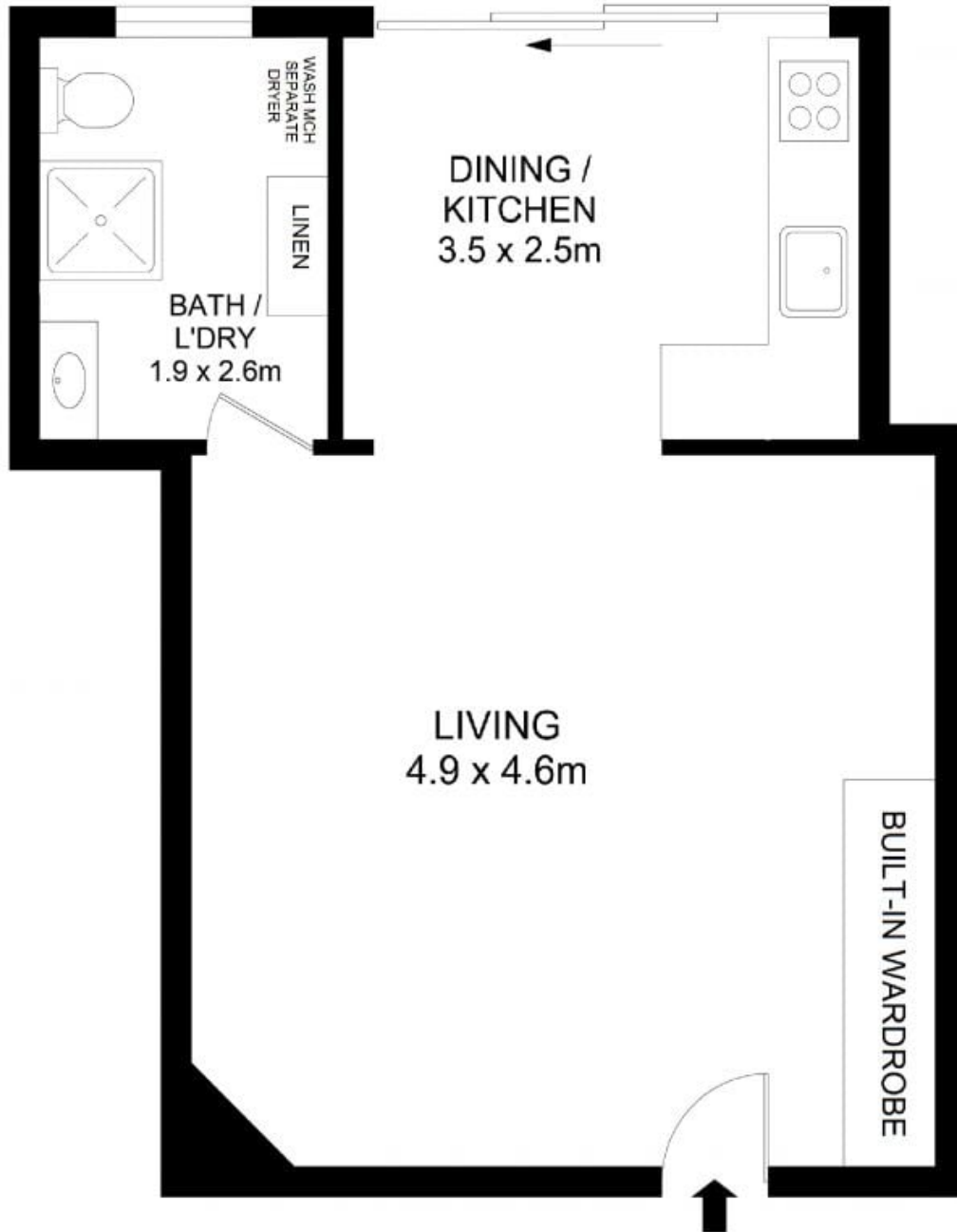
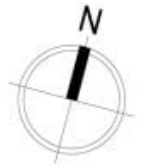
[rwebay.com.au/7990543](https://www.rwebay.com.au/7990543)

Penny Timothy 0418 546 500

Luke McDonnell 0418 844 110

**Proudly Richardson&Wrench**

Richardson & Wrench Elizabeth Bay / Potts Point  
02 8356 2700



## 36 /20-22 Springfield Avenue, Potts Point

### Disclaimer

Floor Plan measurements are approximate and are for illustrative purposes only. While we cannot doubt the floor plans accuracy, we make no guarantee, warranty or representation as to the accuracy and completeness of the floor plan.