



31/90-92 Elizabeth Bay Road Elizabeth Bay, NSW

1 bed | 1 bath

R&W

Positioned high on Level 5 of the tower building of Brentwood Gardens in the prestigious 'loop' section of Elizabeth Bay Road, this bright one bedroom apartment has a stunning outlook from the balcony to the neighbouring Italianate Villa bordered by lush gardens next door and gothic Adreham Hall opposite.

An excellent investment opportunity, city bolt-hole or ...

Auction Thursday, 30th May 6:00 - On Site

Open Thursday, 23rd May 2024 11:00 - 11:30

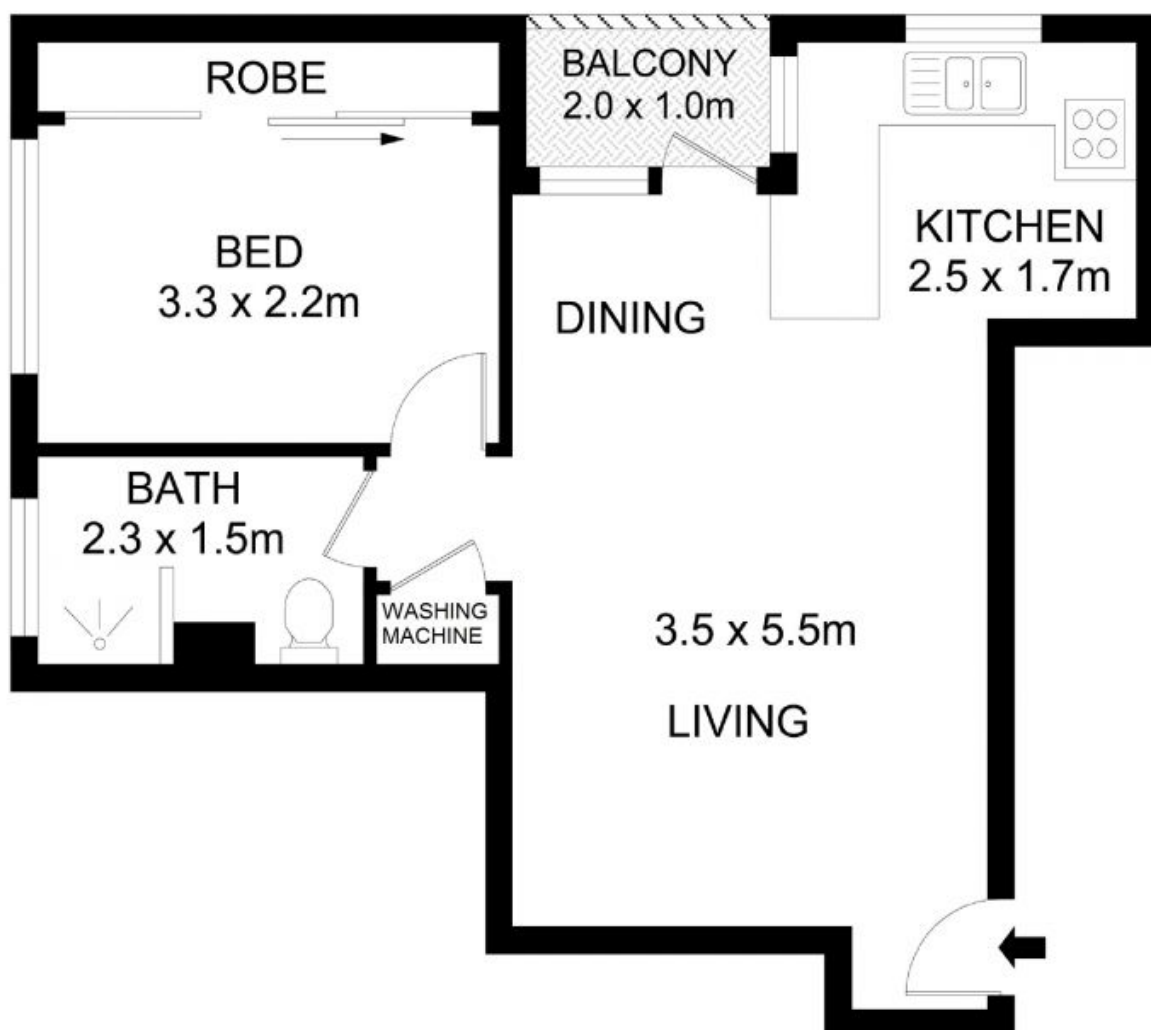
rwebay.com.au/7990617

Penny Timothy 0418 546 500

Luke McDonnell 0418 844 110

Proudly Richardson&Wrench

Richardson & Wrench Elizabeth Bay / Potts Point
02 8356 2700



31/90-92 Elizabeth Bay Road, Elizabeth Bay

Disclaimer

Floor Plan measurements are approximate and are for illustrative purposes only. While we cannot doubt the floor plans accuracy, we make no guarantee, warranty or representation as to the accuracy and completeness of the floor plan.

Every precaution has been taken to establish accuracy of the information in this brochure but does not constitute any representation by the vendor or agent.

