



66/12 Wylde Street Potts Point, NSW

1 bed | 1 bath

Opening onto a wide balcony with bonus views of the CBD skyline and across to the sparkling Harbour, this stylish & modern low maintenance apartment is situated in Gweedore, a tightly held c.1959 landmark strata block.

- Level lift access via smartly upgraded main security lobby
- Open living/dining areas lead out to full length balcony
- Sleek contemporary Quantum quartz kitchen
- Spacious bedroom with balcony access and built-in robes
- Light and airy, modernised bathroom with internal laundry

Outgoings:...

R&W

Auction Thursday, 20th June 6:00 - On Site

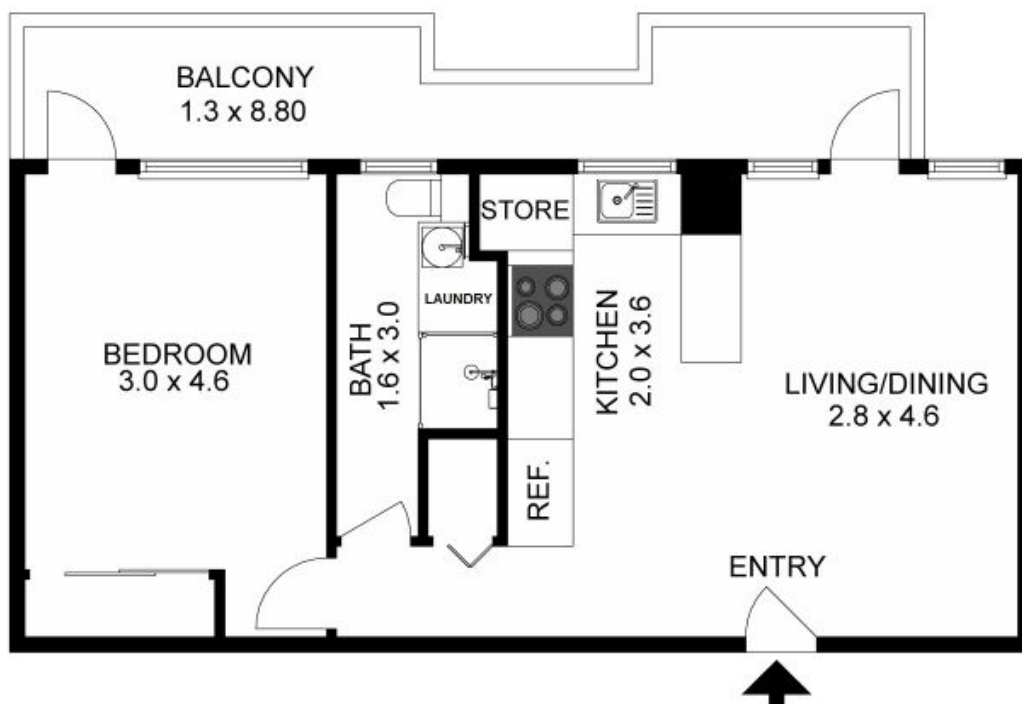
[rwebay.com.au/7995888](https://www.rwebay.com.au/7995888)

Angelo Bouras 0401 658 653

Thomas Arthurs 0414 026 412

Proudly Richardson&Wrench

Richardson & Wrench Elizabeth Bay / Potts Point
02 8356 2700



66/12 WYLDE STREET, POTTS POINT

The floor plan is not to scale; measurements are indicative and in metres. Exterior elements are not in position. Plans should not be relied on. Interested parties should make and rely on their own enquiries.