



## 200/12 Macleay Street Potts Point, NSW

2 bed | 1 bath

Exuding charm and beauty reflective of its timeless Potts Point address, this immaculate apartment promises a true cosmopolitan lifestyle. Internally it features a generous design enhanced by Herringbone floors, subtle ornate details and serene tree top vistas, while the balcony outside gazes across the character filled buildings and cascading greenery of Macleay Street.

Located within the landmark 'Macleay Regis', inspired by New York City's Rockefeller Apartments, this property truly is a rare market offering.

- Designated lounge and dining zones effortlessly flow ...

# R&W

[rwebay.com.au/8009180](https://www.rwebay.com.au/8009180)

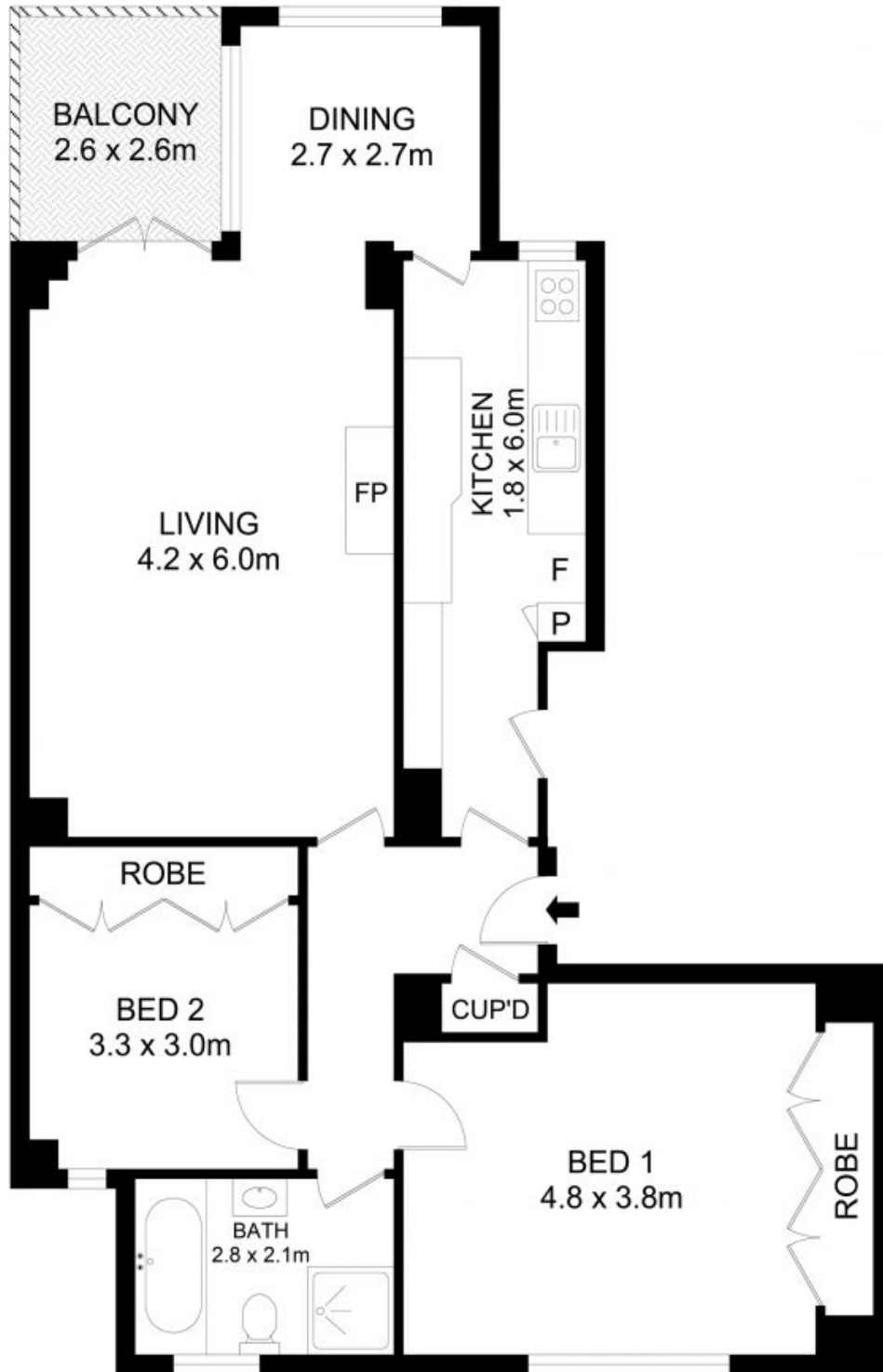
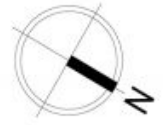
Greg McKinley 0412 044 822

Angelo Bouras 0401 658 653

Andrew Hoggett 0412 208 614

**Proudly Richardson&Wrench**

Richardson & Wrench Elizabeth Bay / Potts Point  
02 8356 2700



## 200/12 Macleay Street, Potts Point



### Disclaimer

Floor Plan measurements are approximate and are for illustrative purposes only. While we cannot doubt the floor plans accuracy, we make no guarantee, warranty or representation as to the accuracy and completeness of the floor plan.

Every precaution has been taken to establish accuracy of the information in this brochure but does not constitute any representation by the vendor or agent.

**R&W**