



53/20-22 Springfield Avenue Potts Point, NSW

| 1 bath

R&W

Perched atop the iconic 'Sandringham' building, this bright studio apartment boasts a coveted Juliet balcony, one of only four balconied apartments in the entire building. Oriented northward, it offers captivating views across to the city skyline, with glimpses of the Opera House and Harbour Bridge. Particularly captivating are the views of twinkling evening lights and NYE fireworks. Nestled in vibrant Potts Point, this sun-soaked apartment provides direct access to Llandkelly Place's alfresco dining scene. Whether you seek a short term rental opportunity or a city retreat, this apartment's elevated position provides a tranquil escape, complemented by easy access to a communal rooftop terrace.

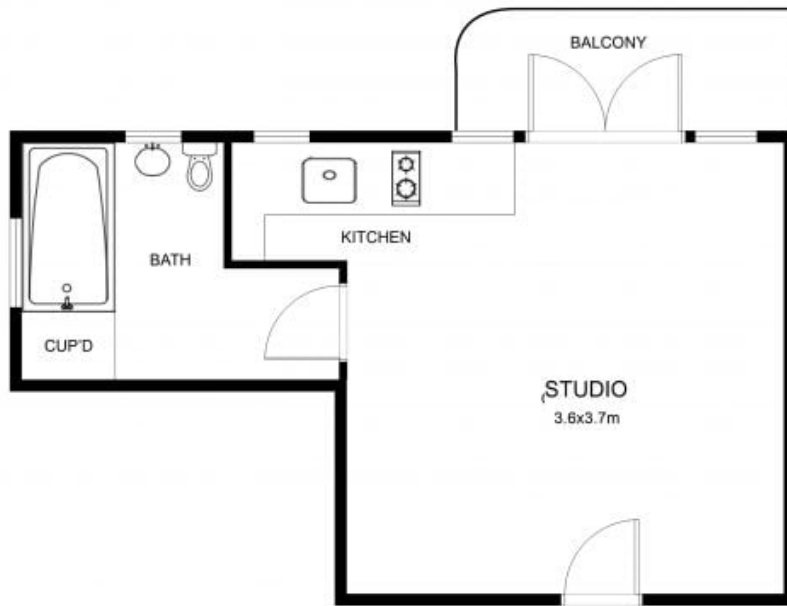
French doors open to a charming north-facing balcony...

rwebay.com.au/8011353

Penny Timothy 0418 546 500

Proudly Richardson&Wrench

Richardson & Wrench Elizabeth Bay / Potts Point
02 8356 2700



FLOOR PLAN

53/20-22 Springfield Avenue, Potts Point

Disclaimer:
Floor Plan measurements are approximate and are for illustrative purposes only. While we cannot doubt the floor plan accuracy, we make no guarantee, warranty or representation as to the accuracy and completeness of the floor plan.

