



29 Challis Avenue Potts Point, NSW

4 bed | 4 bath | 3 car

Rarely does an opportunity arise that presents a home of such extraordinary space, traditional grandeur and stunning contemporary design. Immaculately presented and beautifully renovated throughout, 'Saraville' c1890 will leave you breathless with its sheer elegance, vast size and privileged position on what is widely regarded as the best street in Potts Point.

This freestanding Italianate home is one of a landmark ...

R&W

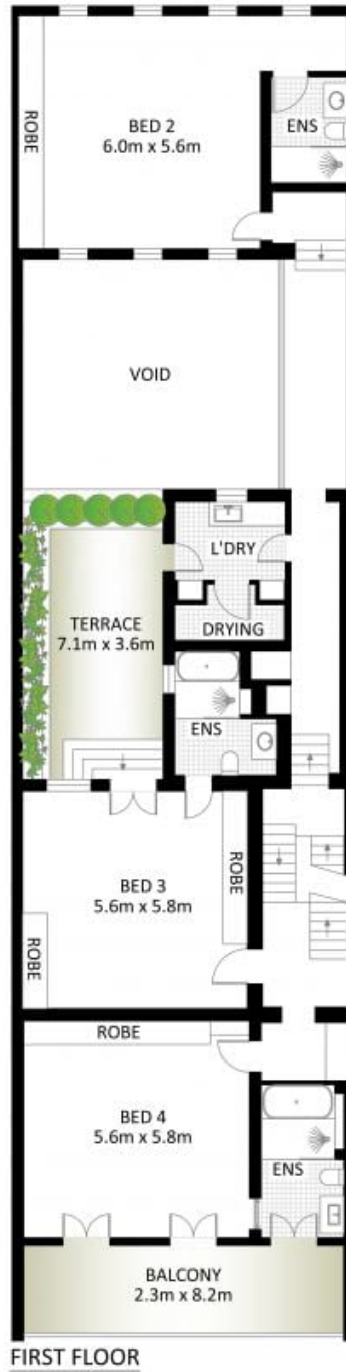
rwebay.com.au/8087847

Jason Boon 0418 671 494

Geoff Cox 0418 231 004

Proudly Richardson&Wrench

Richardson & Wrench Elizabeth Bay / Potts Point
02 8356 2700



Internal Area : Approx. 475m²
 External Area : Approx. 160m²
 Total Area : Approx. 635m²



29 Challis Avenue, Potts Point

*PLANS SHOWN ONLY INDICATIVE OF LAYOUT. DIMENSIONS ARE APPROXIMATE.

Measurements are approximate and not to scale. The vendor, agency and supplier will accept no liability for its accuracy. Interested parties are advised to make their own independent enquiries.