



2/7 St Neot Avenue Potts Point, NSW

| 1 bath

"Park View" is an Art-Deco c1939 security intercom walk-up building located at the end of leafy St Neot Avenue featuring an ornate brick entrance, original lobby with spiral stairs leading to a common rooftop area with Bridge & Opera House views. Apartment 2 is quietly positioned front side of the block on an elevated ground floor position with a sunny North West aspect in a premium Potts Point lifestyle location, a short stroll to Macleay St, Fitzroy Gardens, Woolloomooloo foreshore, Rushcutters Bay Park, The Domain and train to CBD. Ready for a first home buyer, downsizer, investor or "pied-a-terre".

- Character features, high ceilings...

R&W

rwebay.com.au/8122082

Rod Angus 0419 599 888

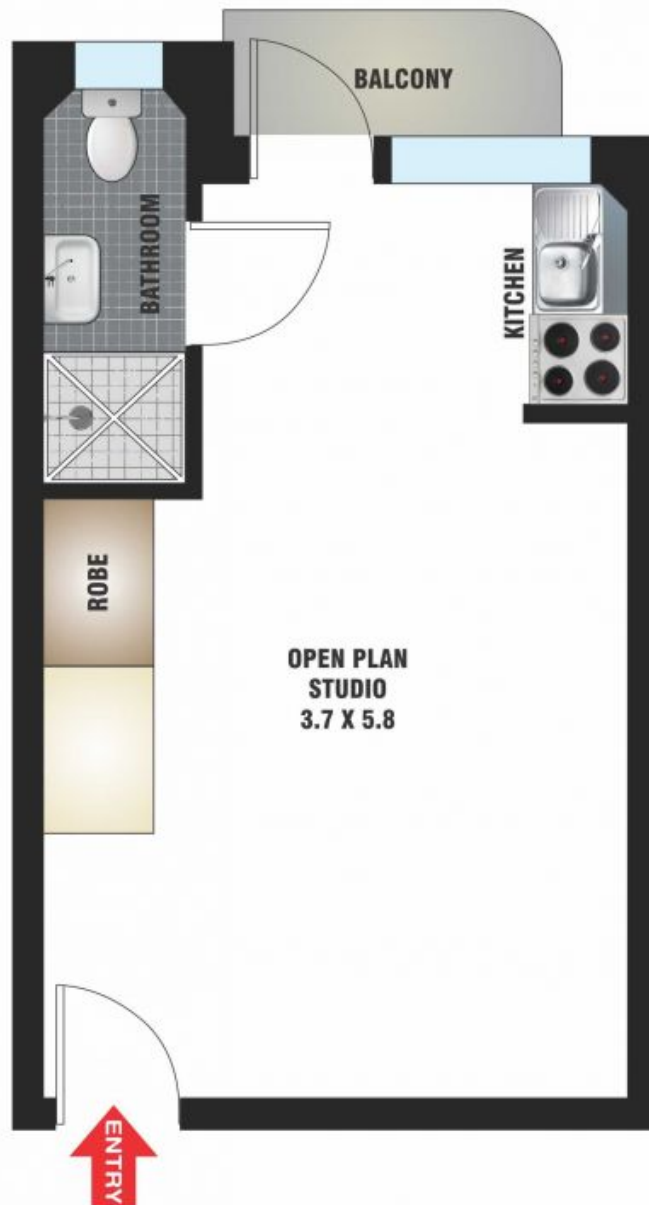
Proudly Richardson&Wrench

Richardson & Wrench Elizabeth Bay / Potts Point
02 8356 2700

R&W

Elizabeth Bay
TEL: 02 8356 2700

2/7 St Neot Avenue
POTTS POINT



FLOOR PLAN BY BORTEX PTY LTD PH: 0414 922 679

"The information contained herein has been provided by our Principal and third parties, which we merely pass on without any representation or warranty given, intended or implied by us as to its correctness and with no liability accepted by us in this regard. You must rely on your own inquiries as to its accuracy or otherwise."

Every precaution has been taken to establish accuracy of the information in this brochure but does not constitute any representation by the vendor or agent.

R&W