



22/6-8 Ithaca Road Elizabeth Bay, NSW

2 bed | 1 bath

- Stunning original timber floors throughout
- Renovated gas kitchen with European appliances
- Internal laundry with brand new washer/dryer
- Renovated bathroom with bathtub
- Built-in wardrobes in both bedrooms
- Balcony with tranquil leafy outlook
- Sought after Art Deco security building
- Short walk to parks, shops, Potts Point cafes/restaurants

Approx. Outgoings: ...

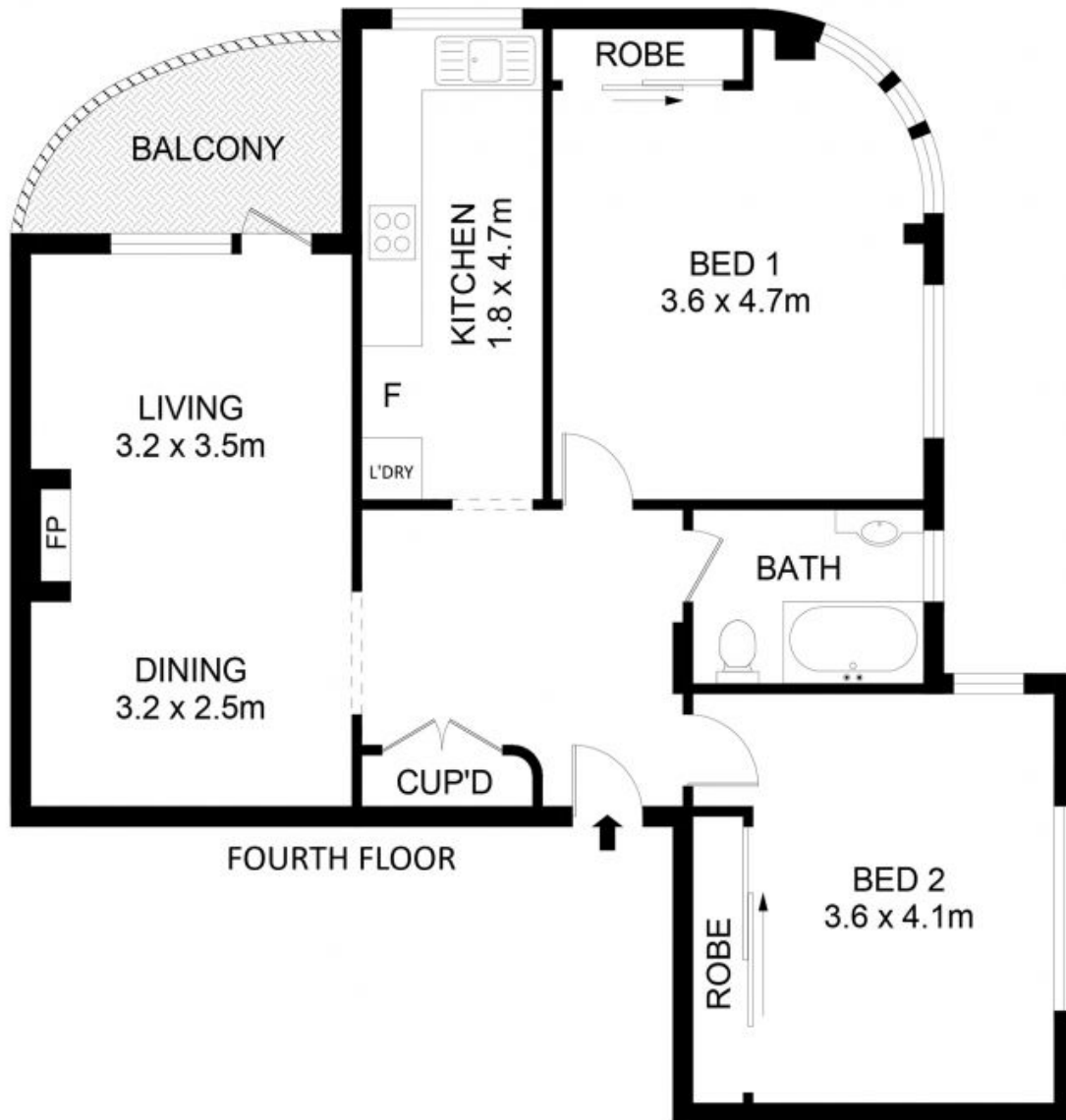
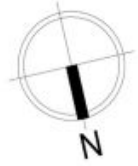
R&W

rwebay.com.au/8269996

Angelo Bouras 0401 658 653

Proudly Richardson&Wrench

Richardson & Wrench Elizabeth Bay / Potts Point
02 8356 2700



22/6-8 Ithaca Road, Elizabeth Bay

Disclaimer

Floor Plan measurements are approximate and are for illustrative purposes only. While we cannot doubt the floor plans accuracy, we make no guarantee, warranty or representation as to the accuracy and completeness of the floor plan.

Every precaution has been taken to establish accuracy of the information in this brochure but does not constitute any representation by the vendor or agent.

R&W