



6/19 Kellett Street Potts Point, NSW

1 bed | 1 bath

Set at the front of the charming Spanish Mission-style San Jose building, this north-facing one-bedroom strata apartment is a rare find.

Open your front door to a picturesque arched window in the sunroom, framed by jacaranda trees, with views to the sandstone terrace houses opposite. Full of natural light with windows on three sides, the apartment features timber floors, high ceilings, and a thoughtfully designed open-plan kitchen.

The oversized bedroom impresses with a bay window showc...

R&W

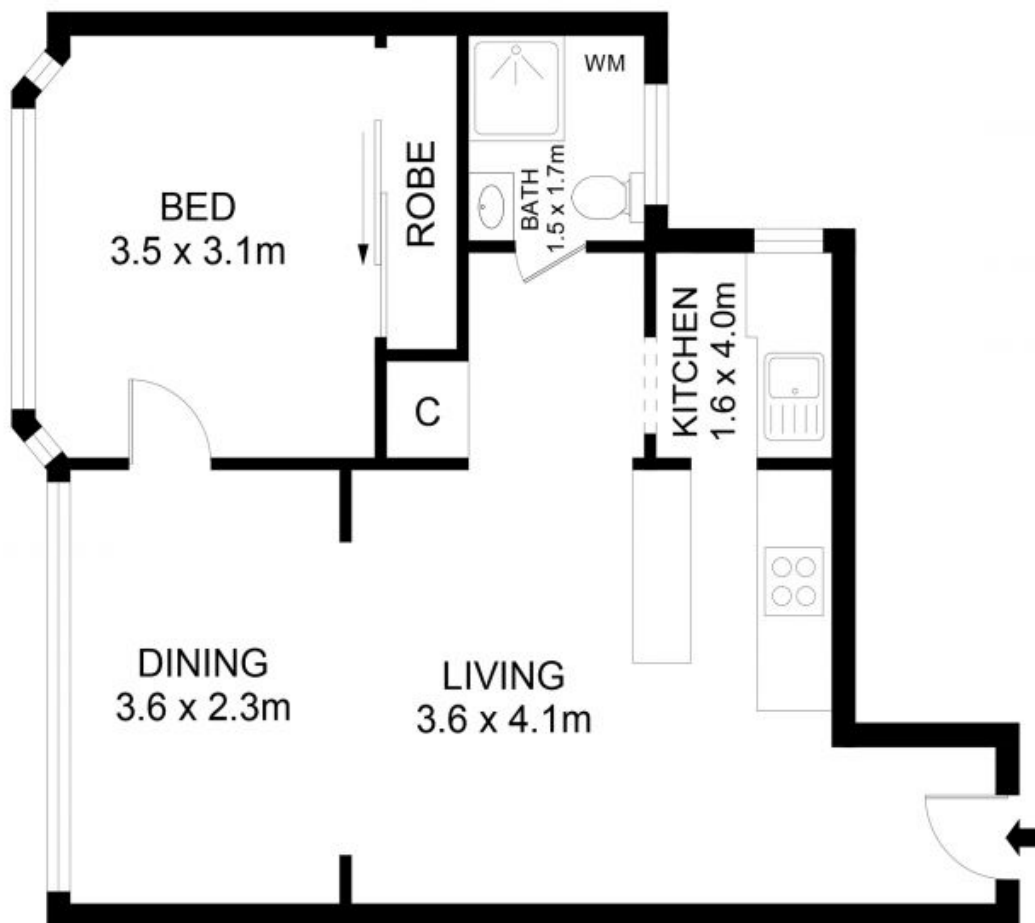
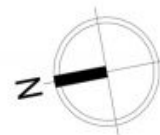
rwebay.com.au/8273459

Penny Timothy 0418 546 500

Luke McDonnell 0418 844 110

Proudly Richardson&Wrench

Richardson & Wrench Elizabeth Bay / Potts Point
02 8356 2700



6/19 Kellett Street, Potts Point



Disclaimer

Floor Plan measurements are approximate and are for illustrative purposes only. While we cannot doubt the floor plans accuracy, we make no guarantee, warranty or representation as to the accuracy and completeness of the floor plan.

Every precaution has been taken to establish accuracy of the information in this brochure but does not constitute any representation by the vendor or agent.

R&W