



18/10 Barncleuth Square Elizabeth Bay, NSW

| 1 bath | 1 car

R&W

Filled with an abundance of natural light in a North East position on Level 3 this 32.5m² studio apartment is located just a short stroll to the finest local cafes, bars, restaurants, weekend markets & transport options. Enter through the inviting, grassy lawn forecourt of the well maintained Boomerang building.

- North East aspect with views towards Rushcutters Bay and Paddington terrace houses
- Space saving Murphy wall bed integrated into a stylish living area
- Modern kitchen with ample storage & district views...

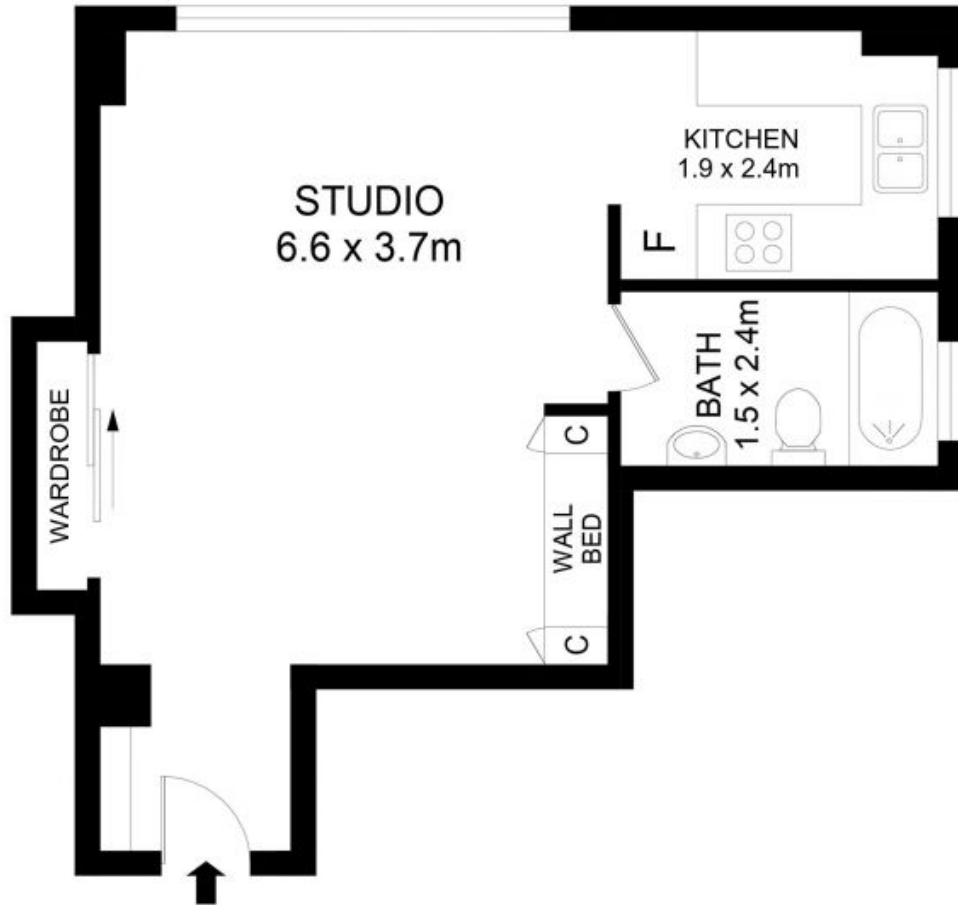
rwebay.com.au/8275787

Penny Timothy 0418 546 500

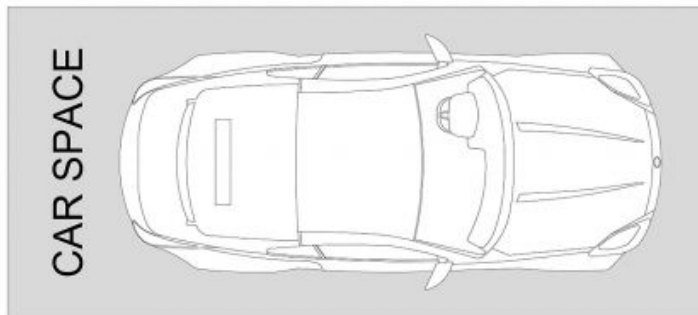
Luke McDonnell 0418 844 110

Proudly Richardson&Wrench

Richardson & Wrench Elizabeth Bay / Potts Point
02 8356 2700



Note:
Apartment on Level 3
Carspace on Ground Level



18/10 Barncleuth Square, Elizabeth Bay

Disclaimer

Floor Plan measurements are approximate and are for illustrative purposes only. While we cannot doubt the floor plans accuracy, we make no guarantee, warranty or representation as to the accuracy and completeness of the floor plan

Every precaution has been taken to establish accuracy of the information in this brochure but does not constitute any representation by the vendor or agent.

