



## 36/347 Liverpool Street Darlinghurst, NSW

| 1 bath

Classic Art Deco charm feature in this bright studio. Set quietly on the third floor of landmark "Mont Clair", this apartment is a rare find. With a sleeping alcove, large windows and spacious feel it offers fabulous city-side living.

- > Parquetry floors & high ceilings
- > Separate sleeping alcove
- > Original 1938 style bathroom with tub
- > Updated kitchen
- > Great storage

Outgoings (approx.)...

# R&W

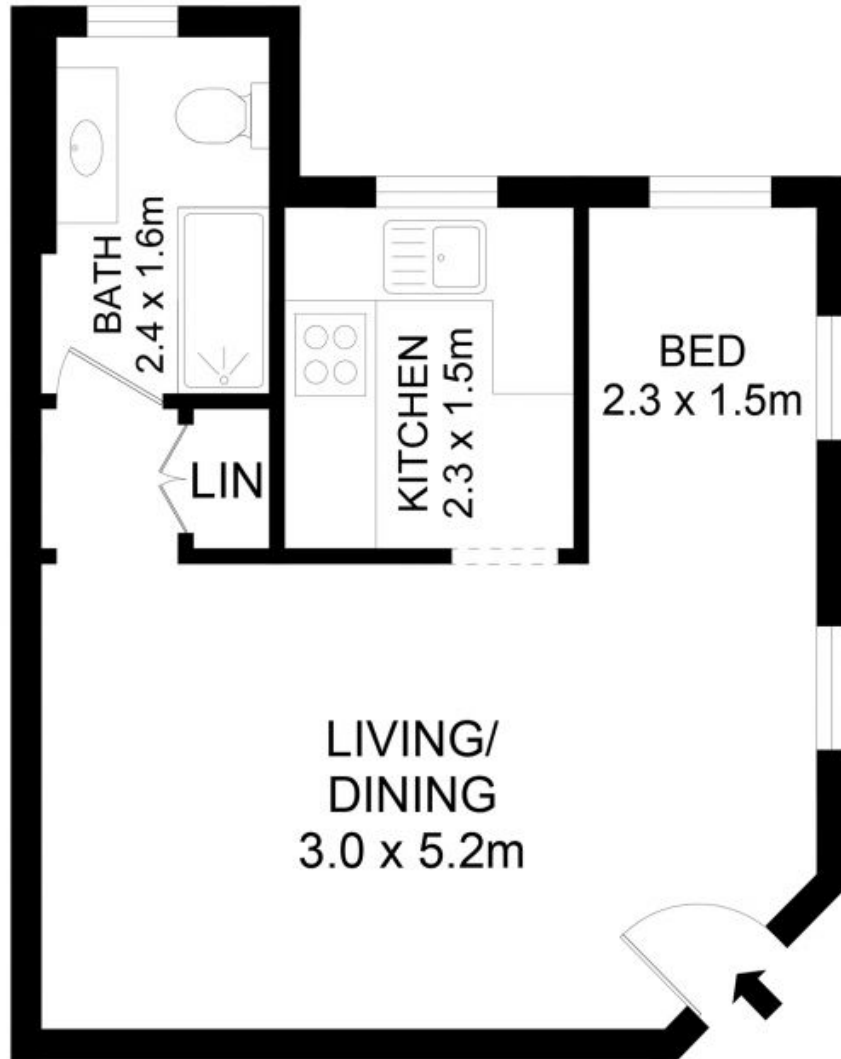
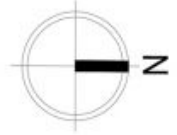
[rwebay.com.au/8311307](http://rwebay.com.au/8311307)

Greg McKinley 0412 044 822

Penny Timothy 0418 546 500

**Proudly Richardson&Wrench**

Richardson & Wrench Elizabeth Bay / Potts Point  
02 8356 2700



36/347 Liverpool Street, Darlinghurst

**Disclaimer**

Floor Plan measurements are approximate and are for illustrative purposes only. While we cannot doubt the floor plans accuracy, we make no guarantee, warranty or representation as to the accuracy and completeness of the floor plan.

Every precaution has been taken to establish accuracy of the information in this brochure but does not constitute any representation by the vendor or agent.

