



29/76 Elizabeth Bay Road Elizabeth Bay, NSW

| 1 bath

With a treetop aspect and great natural light this Art Deco studio offers fabulous opportunity. Perfectly positioned at the entrance to the prestigious loop the apartment is an easy walk to the Harbour, Rushcutters Bay park and restaurants on Macleay Street.

- > Top floor apartment offering 20sqm of space
- > Treetop aspect with morning sun
- > Modernised kitchen & bathroom
- > Timber style floors

Outgoings (approx.)...

R&W

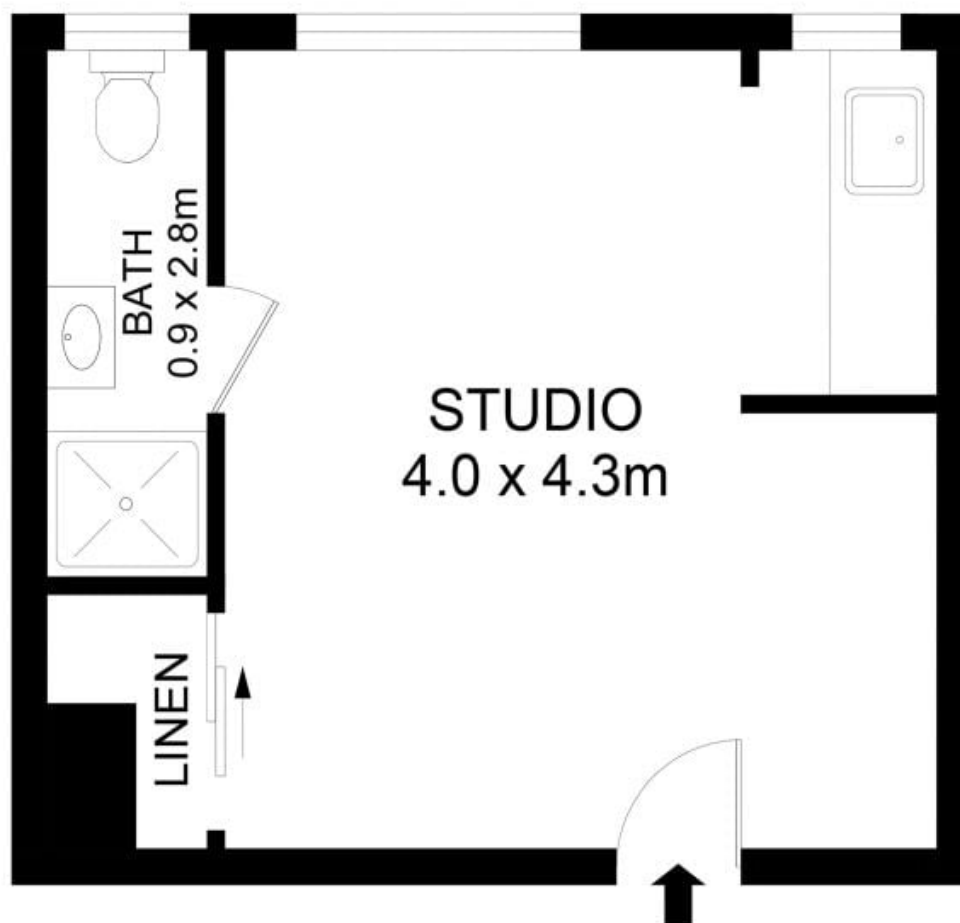
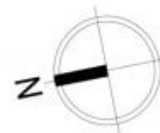
rwebay.com.au/8321376

Greg McKinley 0412 044 822

Andrew Hoggett 0412 208 614

Proudly Richardson&Wrench

Richardson & Wrench Elizabeth Bay / Potts Point
02 8356 2700



29/76 Elizabeth Bay Road, Elizabeth Bay

Disclaimer

Floor Plan measurements are approximate and are for illustrative purposes only. While we cannot doubt the floor plans accuracy, we make no guarantee, warranty or representation as to the accuracy and completeness of the floor plan.

Every precaution has been taken to establish accuracy of the information in this brochure but does not constitute any representation by the vendor or agent.

R&W