



## 23/17 Wylde Street Potts Point, NSW

2 bed | 1 bath

- Renovated 2-bed home w superb heritage-sympathetic styling
- Charming E/NE aspect, large windows capturing plenty of sun
- Marvellous sunny living area, Japan Black parquet floors
- Large master bedroom, harbour glimpses, huge walk-in robe
- Bespoke kitchen w llve appliances, superbly sleek bathroom
- Ideal guest or 2nd bedroom, hallway storage, Internal Laundry
- High ceilings, good storage space, access to shared rear balcony

# R&W

[rwebay.com.au/8327909](https://rwebay.com.au/8327909)

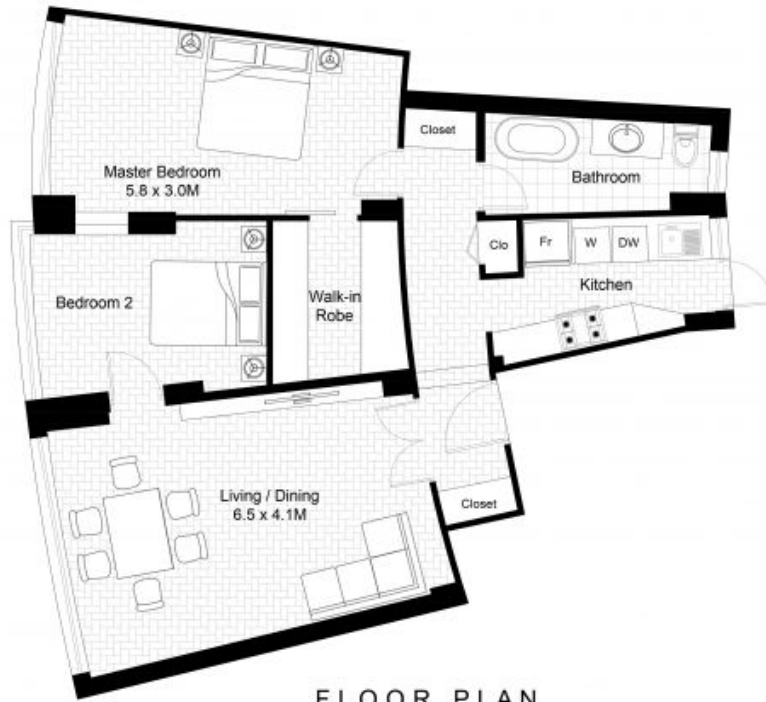
Jason Boon 0418 671 494

Geoff Cox 0418 231 004

Joss Reid 0414 662 391

**Proudly Richardson&Wrench**

Richardson & Wrench Elizabeth Bay / Potts Point  
02 8356 2700



FLOOR PLAN

This floor plan including furniture, fixture measurements and dimensions are approximate and for illustrative purposes only. Realist.com gives no guarantee, warranty or representation as to the accuracy and layout. All enquiries must be directed to the agent, vendor or party representing this floor plan.

23/17 Wyld Street Potts Point