



15/8 Greenknowe Avenue Elizabeth Bay, NSW

1 bed | 1 bath | 1 car

R&W

A sumptuous harbourside haven, bathed in sun and boasting an apartment-wide terrace with leafy NE outlook across towards the harbour, serene luxury living awaits at this deluxe 1-bedroom apartment. Set on the convenient ground-level of the famed resort-like "Manhattan" and boasting a meticulous designer renovation, it offers an outstanding base in this buzzing neighbourhood, complete with private parking.

With level access from the building's secure concierge...

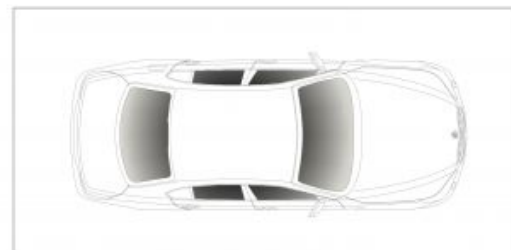
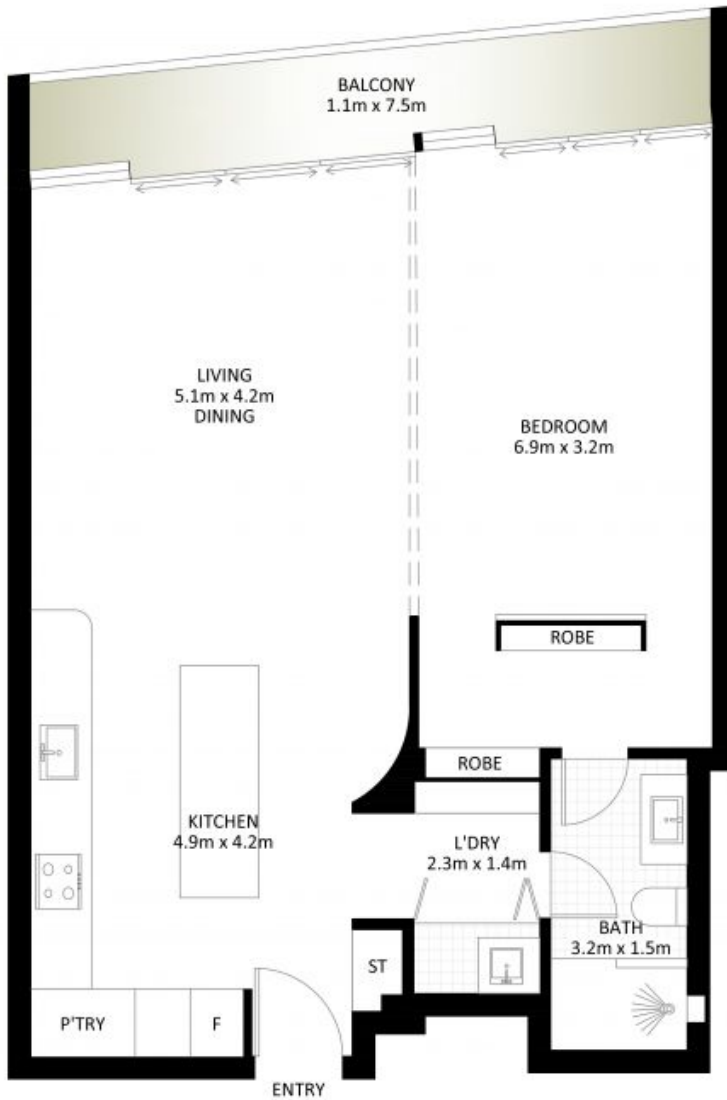
rwebay.com.au/8342454

Angelo Bouras 0401 658 653

Joss Reid 0414 662 391

Proudly Richardson&Wrench

Richardson & Wrench Elizabeth Bay / Potts Point
02 8356 2700



SECURE COVERED CAR SPACE
2.7m x 5.5m
(NOT ACTUAL LOCATION)

15/8 Greenknowe Avenue, Elizabeth Bay



*PLANS SHOWN ONLY INDICATIVE OF LAYOUT. DIMENSIONS ARE APPROXIMATE.

Measurements are approximate and not to scale. The vendor, agency and supplier will accept no liability for its accuracy. Interested parties are advised to make their own independent enquiries.