



## 3/2 Elizabeth Bay Crescent Elizabeth Bay, NSW

3 bed | 2 bath | 1 car

**R&W**

A home of rare distinction and timeless grandeur, this beautiful apartment is a once-in-a-lifetime offering after almost 40 years.

Nestled in a private pocket, the absolute waterfront and landmark 'Beverley Hall' building beckons you to the front door past wrought iron gates and its striking 1929 Spanish Mission Art Deco style facade. Double wooden doors open to unfold a vast 186sqm design luxuriating in endless light, fresh breezes and sublime yacht studded panoramas across the harbour.

Stately living and dining domains, leadlight embellishe...

[rwebay.com.au/8351306](http://rwebay.com.au/8351306)

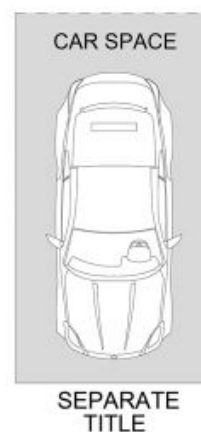
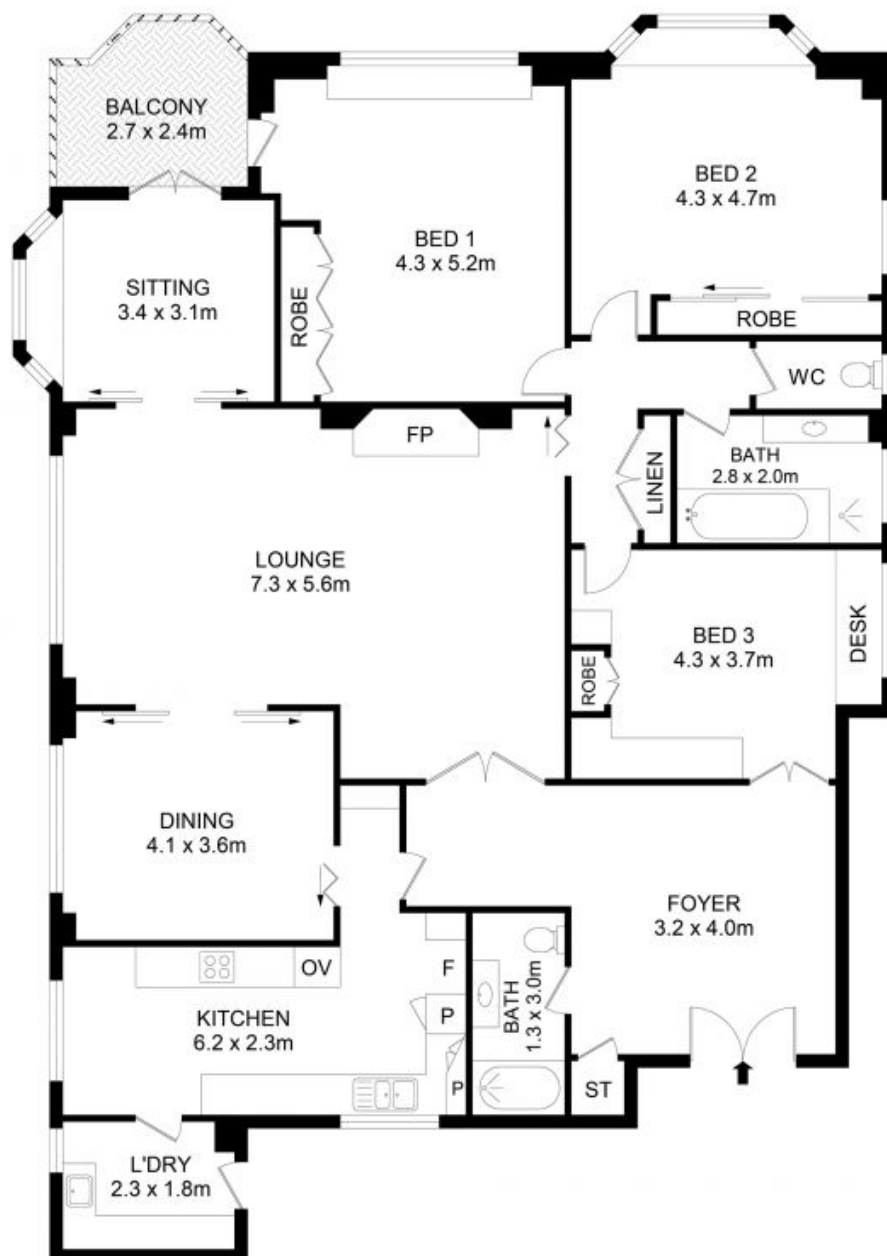
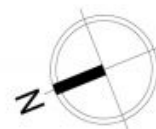
Greg McKinley 0412 044 822

Andrew Hoggett 0412 208 614

Jason Boon 0418 671 494

**Proudly Richardson&Wrench**

Richardson & Wrench Elizabeth Bay / Potts Point  
02 8356 2700



## 3/2 Elizabeth Bay Crescent, Elizabeth Bay



### Disclaimer

Floor Plan measurements are approximate and are for illustrative purposes only. While we cannot doubt the floor plans accuracy, we make no guarantee, warranty or representation as to the accuracy and completeness of the floor plan.

Every precaution has been taken to establish accuracy of the information in this brochure but does not constitute any representation by the vendor or agent.

**R&W**