



## 3/8 Birtley Place Elizabeth Bay, NSW

2 bed | 1 bath

**R&W**

Framed by manicured gardens and set within one of Australia's most revered Art Deco buildings, this elegant apartment blends timeless character with high-end contemporary detail, and scramble parking in secure grounds.

A refined interior palette is anchored by oak parquetry flooring laid in classic herringbone. High ceilings with decorative cornices enhance the sense of volume and light, while bespoke designer lighting adds warmth and sophistication throughout. The spacious living / dining area enjoys windows on thr...

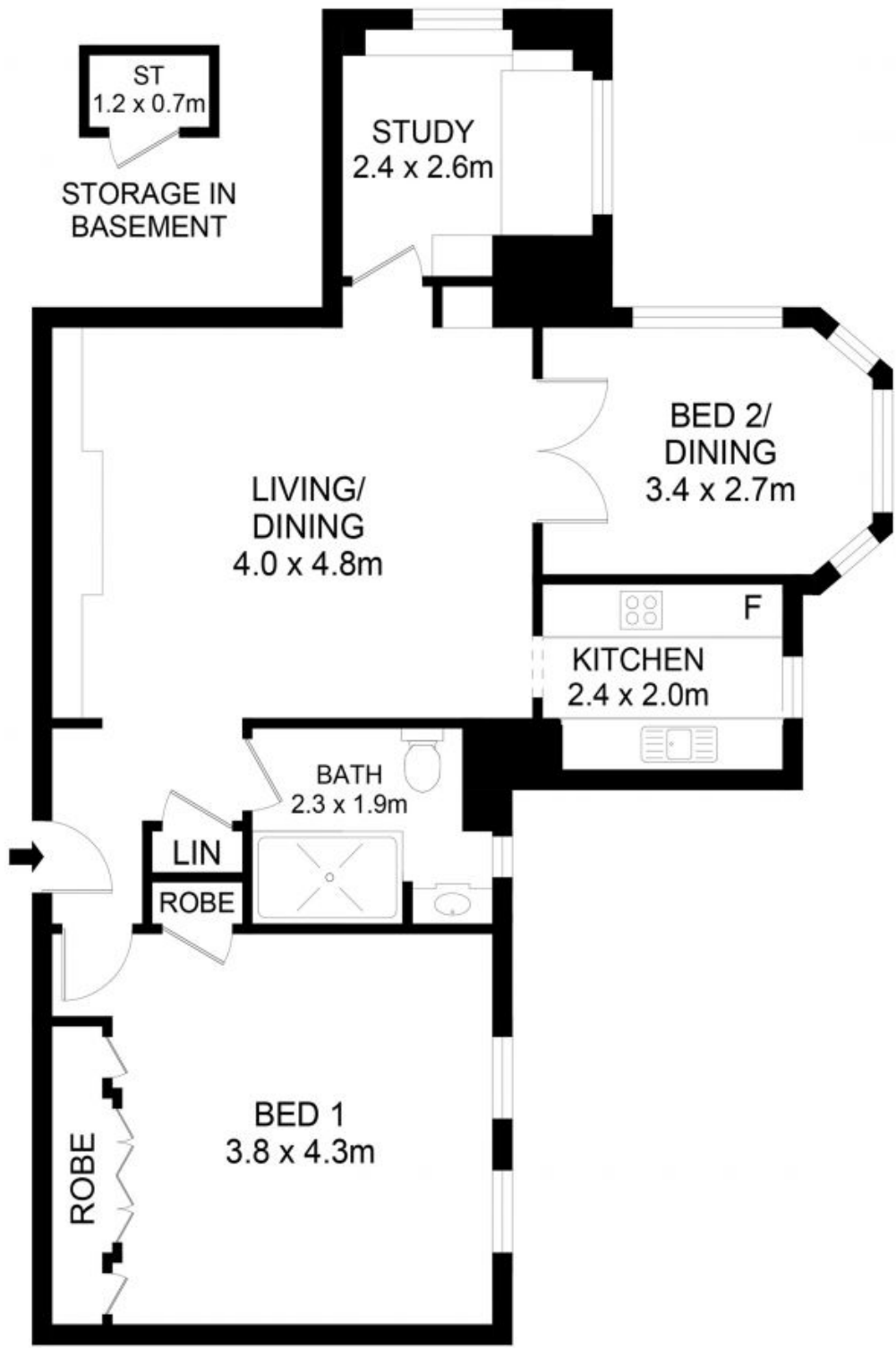
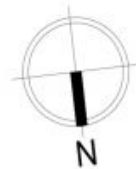
[rwebay.com.au/8373490](https://rwebay.com.au/8373490)

Penny Timothy 0418 546 500

Luke McDonnell 0418 844 110

**Proudly Richardson&Wrench**

Richardson & Wrench Elizabeth Bay / Potts Point  
02 8356 2700



### 3/8 Birtley Place, Elizabeth Bay



**Disclaimer**  
Floor Plan measurements are approximate and are for illustrative purposes only. While we cannot doubt the floor plans accuracy, we make no guarantee, warranty or representation as to the accuracy and completeness of the floor plan.

Every precaution has been taken to establish accuracy of the information in this brochure but does not constitute any representation by the vendor or agent.

