



## 3/41B Elizabeth Bay Road Elizabeth Bay, NSW

1 bed | 1 bath

Imaginatively designed & offering approx. 73 sqm of private space flowing indoors and out, this stylish and very spacious apartment is very light & welcoming. The loft style 2 level accommodation includes lift access to first floor Northwest position in modern security block of just 10. Village style atmosphere with Caf?'s, Restaurants, Parks and Harbour all at your doorstep.

- > Sunny living with open plan dining and double height ceilings.
- > Loggia style balcony with leafy aspect & water glimpses

Outgoings (approx.)...

# R&W

[rwebay.com.au/8380097](http://rwebay.com.au/8380097)

Andrew Hoggett 0412 208 614

Luke McDonnell 0418 844 110

James Hoggett 0438 247 336

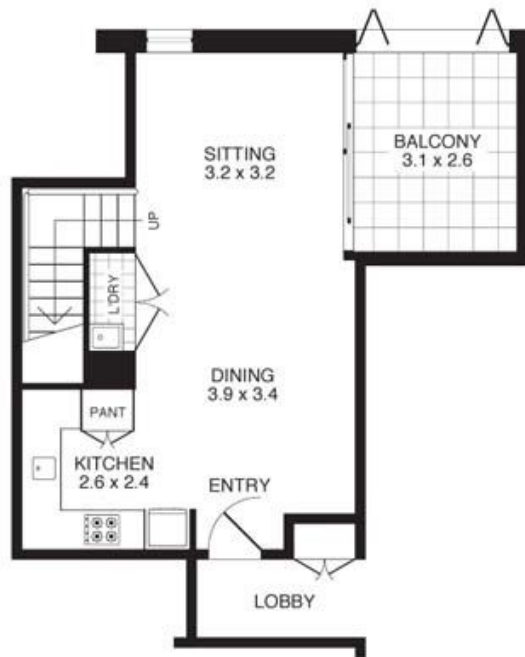
**Proudly Richardson&Wrench**

Richardson & Wrench Elizabeth Bay / Potts Point  
02 8356 2700

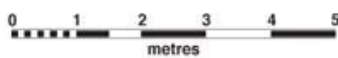
APARTMENT 3/41B ELIZABETH BAY ROAD  
ELIZABETH BAY



**LEVEL TWO**  
Scale 1cm = 1m (approx)



**LEVEL ONE**  
Scale 1cm = 1m (approx)



E&OE This plan is for illustrative purposes only and dimensions are approximate. It does not constitute part of any legal document or commercial contract for the sale or lease of this property.  
COPYRIGHT 2008 PROMOPLANS 02 9572 7111