



42/6 Greenknowe Avenue Elizabeth Bay, NSW

1 bed | 1 bath | 1 car

R&W

Stylishly renovated throughout, this light-filled apartment blends modern finishes with a prized northeast-facing balcony capturing leafy treetop vistas and glimpses of the harbour. Every detail has been thoughtfully considered, from the sleek stone benchtops in the kitchen and bathroom, to the integrated fridge/freezer and dishwasher that enhance the kitchen's seamless design.

The bedroom and living areas are both connected to the ...

rwebay.com.au/8441649

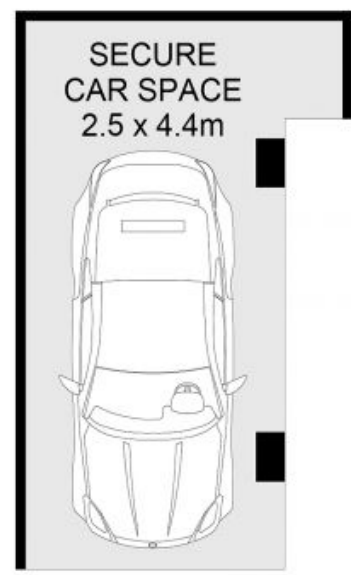
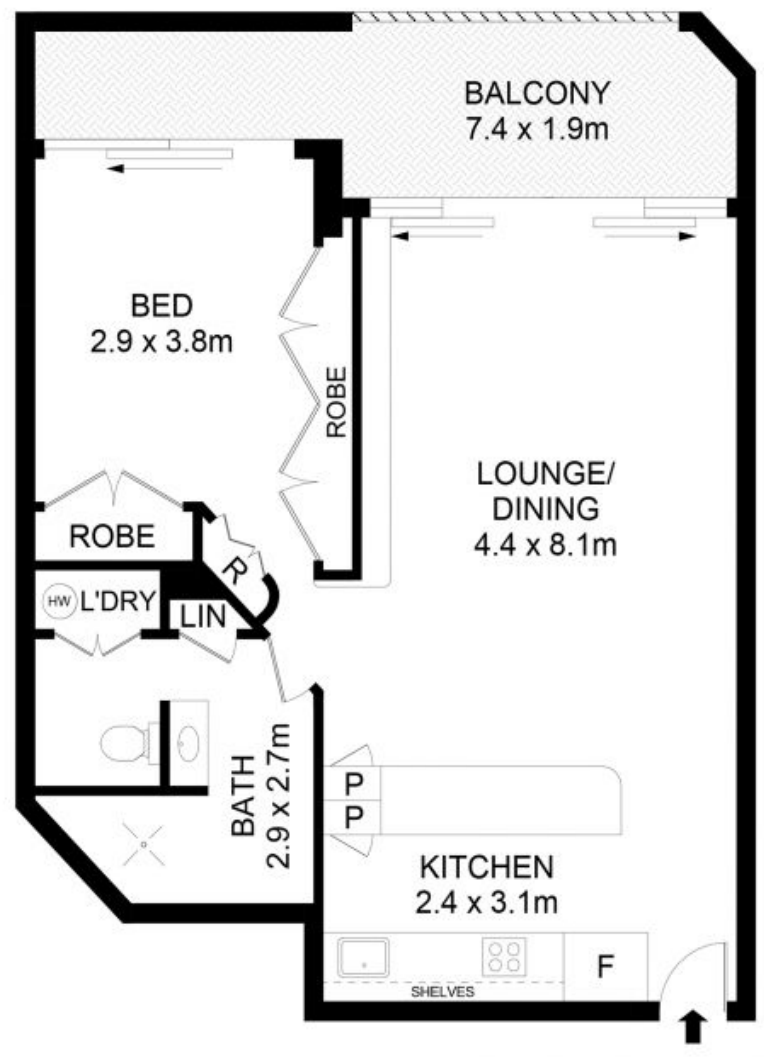
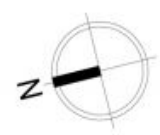
Angelo Bouras 0401 658 653

Greg McKinley 0412 044 822

Alex Mulholland 0410421182

Proudly Richardson&Wrench

Richardson & Wrench Elizabeth Bay / Potts Point
02 8356 2700



42/6 Greenknowe Avenue, Elizabeth Bay

Disclaimer
Floor Plan measurements are approximate and are for illustrative purposes only. While we cannot doubt the floor plans accuracy, we make no guarantee, warranty or representation as to the accuracy and completeness of the floor plan.

Every precaution has been taken to establish accuracy of the information in this brochure but does not constitute any representation by the vendor or agent.

