



2/39 Elizabeth Bay Road Elizabeth Bay, NSW

2 bed | 1 bath | 1 car

R&W

Perfectly positioned and beautifully renovated, this sun-drenched apartment presents an exceptional opportunity for a stylish home or smart investment. Featuring a generous floorplan and expansive balcony, it is the sole residence on the first level and ideally located just a short stroll from vibrant cafés, restaurants, and transport.

rwebay.com.au/8441934

Angelo Bouras 0401 658 653

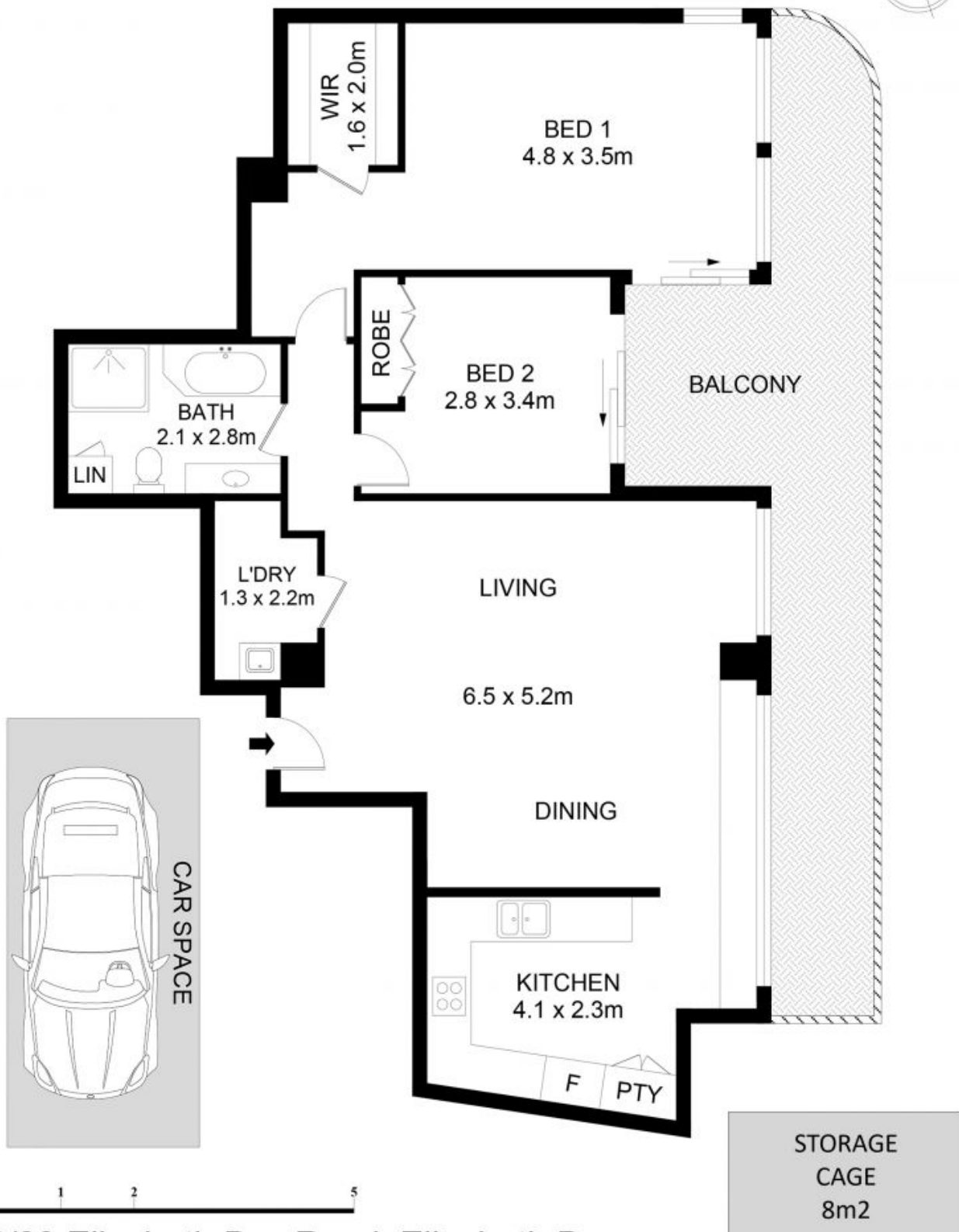
Greg McKinley 0412 044 822

Alex Mulholland 0410421182

Proudly Richardson&Wrench

Richardson & Wrench Elizabeth Bay / Potts Point
02 8356 2700

...



2/39 Elizabeth Bay Road, Elizabeth Bay

Disclaimer

Floor Plan measurements are approximate and are for illustrative purposes only. While we cannot doubt the floor plans accuracy, we make no guarantee, warranty or representation as to the accuracy and completeness of the floor plan.