



4/9 Wylde Street Potts Point, NSW

1 bed | 1 bath

Tucked away in the prestigious "Wyldesyde," a highly sought-after Art Deco building at the Parisian end of Potts Point, this classic one-bedroom apartment combines timeless character with superb convenience. Featuring hardwood floors throughout and a recently updated bathroom, the home retains much of its original charm while offering a comfortable and practical living space. The generous bedroom includes a built-in robe, and large windows invite natural light, enhancing the apartment's sense of warmth and appeal.

Set within an elegant, secure building with access to a...

R&W

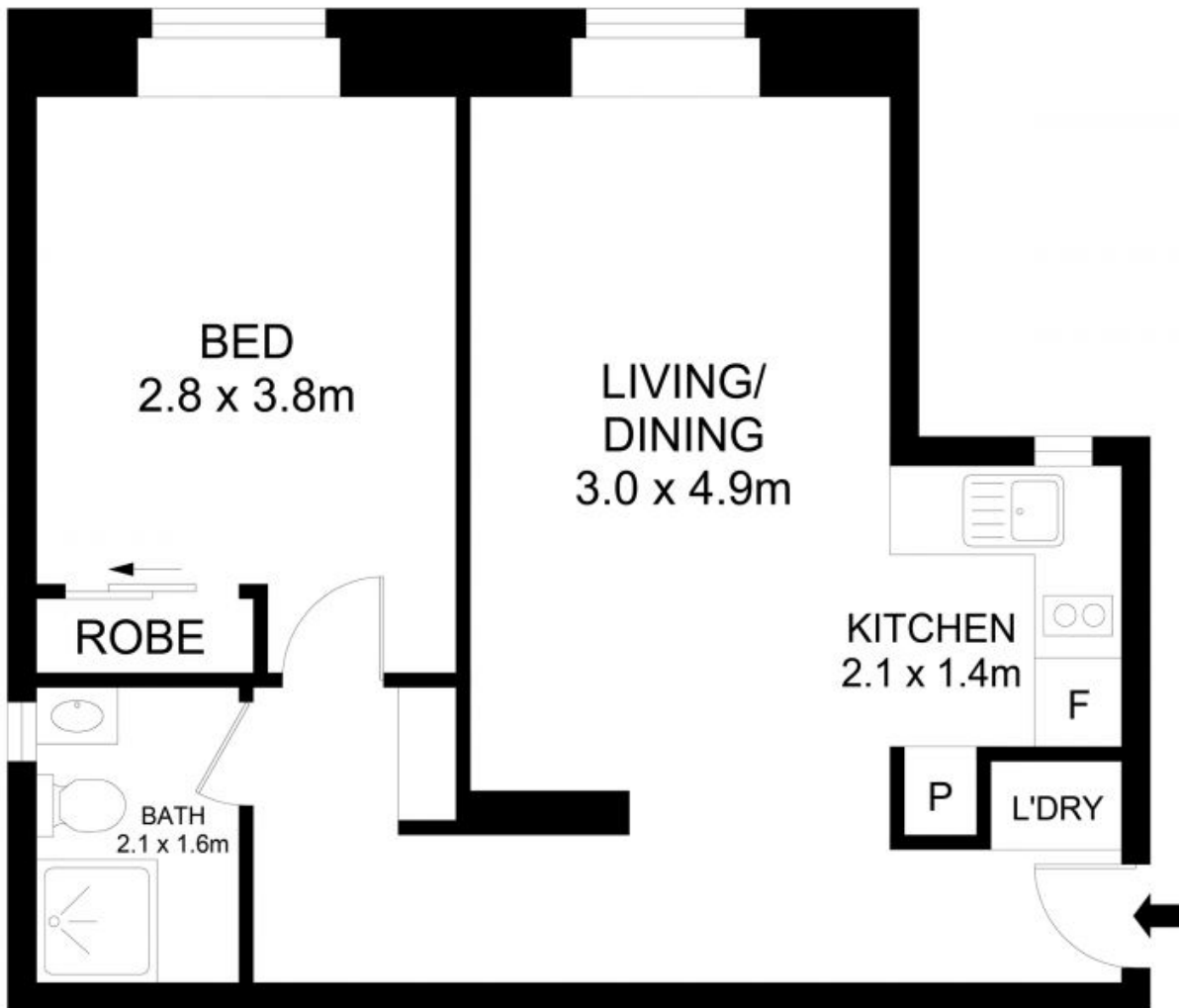
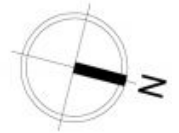
rwebay.com.au/8477781

Angelo Bouras 0401 658 653

Alex Mulholland 0410421182

Proudly Richardson&Wrench

Richardson & Wrench Elizabeth Bay / Potts Point
02 8356 2700



4/9 Wylde Street, Potts Point

Disclaimer

Floor Plan measurements are approximate and are for illustrative purposes only. While we cannot doubt the floor plans accuracy, we make no guarantee, warranty or representation as to the accuracy and completeness of the floor plan.

Every precaution has been taken to establish accuracy of the information in this brochure but does not constitute any representation by the vendor or agent.

R&W