



1/80 Elizabeth Bay Road Elizabeth Bay, NSW

| 1 bath

Located on the entry Level of a modern security building this 25sqm studio apartment is sure to impress with its oversized windows & treetop aspect. With a bright easy flow it makes the perfect city base.

- > Bright studio on entry level of building
- > Oversized windows with leafy aspect
- > Separate modern kitchen. Modern bathroom.
- > Secure building of 25 apartments
- > Common laundry in building

...

R&W

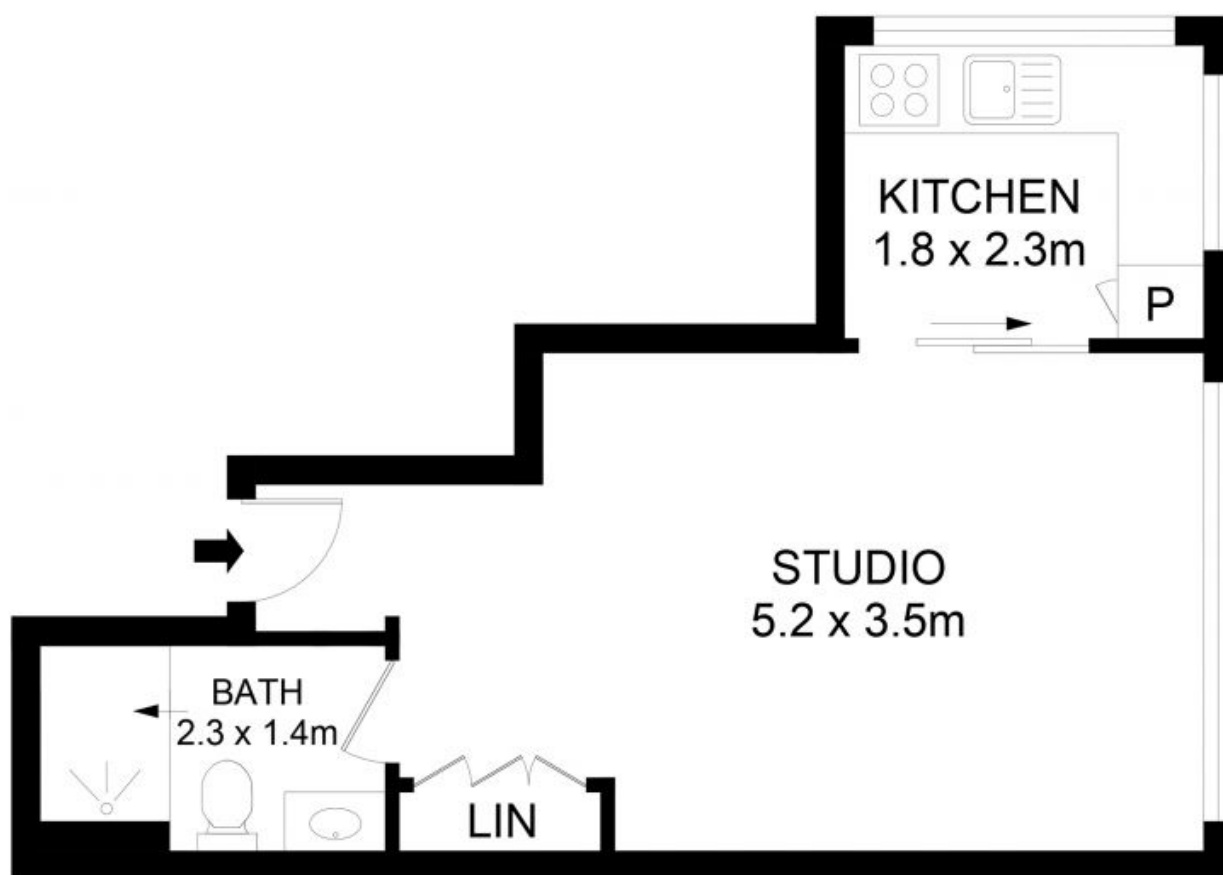
rwebay.com.au/8491728

Greg McKinley 0412 044 822

Andrew Hoggett 0412 208 614

Proudly Richardson&Wrench

Richardson & Wrench Elizabeth Bay / Potts Point
02 8356 2700



1/80 Elizabeth Bay Road, Elizabeth bay

Disclaimer

Floor Plan measurements are approximate and are for illustrative purposes only. While we cannot doubt the floor plans accuracy, we make no guarantee, warranty or representation as to the accuracy and completeness of the floor plan.

Every precaution has been taken to establish accuracy of the information in this brochure but does not constitute any representation by the vendor or agent.

R&W