



44/60-70 William Street Woolloomooloo, NSW

2 bed | 2 bath | 1 car

R&W

An abundance of natural light achieved through the extensive use of floor to ceiling glass combined with an array of quality finishes contributes to a sense of luxury and space. Perched on the cusp of the CBD, Hyde Park & the Domain, this apartment is the optimum cosmopolitan address for a sophisticated lifestyle.

- *Stunning uninterrupted views over parkland to Harbour
- *Resort style rooftop pool & sauna with panoramic views
- *North facing open plan living flows seamlessly to undercover balcony
- *Modern gas kitchen with quality appliances & Caesarsto...

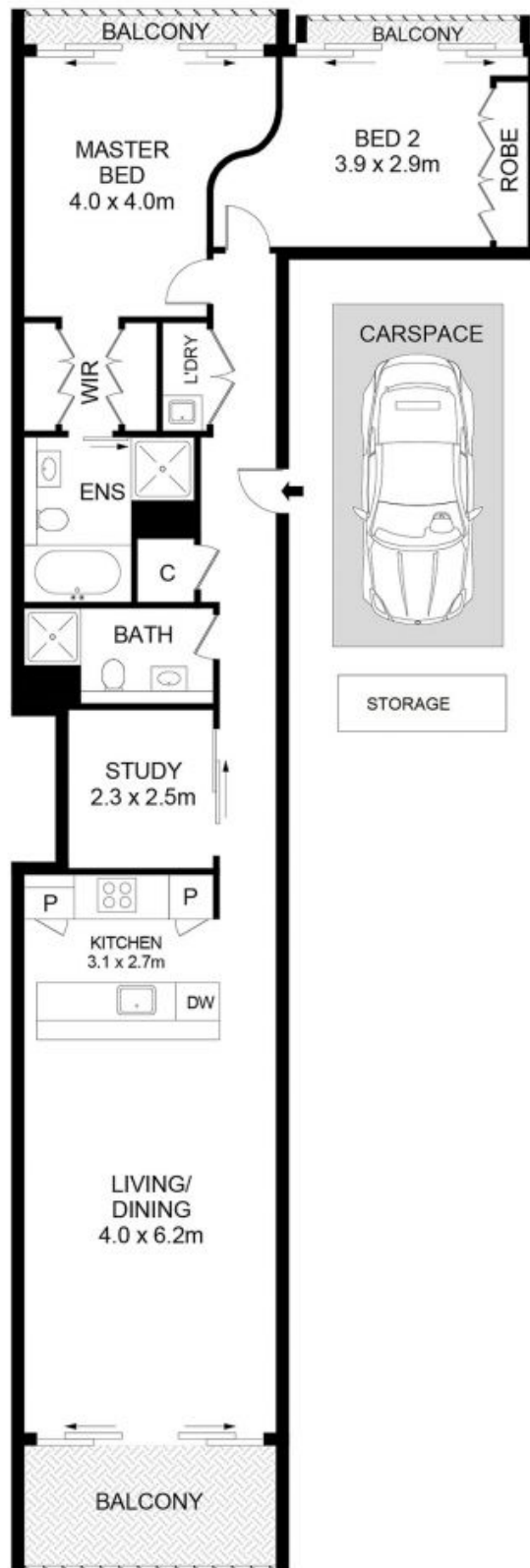
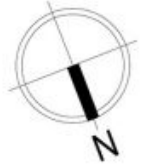
rwebay.com.au/8504671

Angelo Bouras 0401 658 653

Alex Mulholland 0410421182

Proudly Richardson&Wrench

Richardson & Wrench Elizabeth Bay / Potts Point
02 8356 2700



44/60-70 William Street, Woolloomooloo



Disclaimer

Floor Plan measurements are approximate and are for illustrative purposes only. While we cannot doubt the floor plans accuracy, we make no guarantee, warranty or representation as to the accuracy and completeness of the floor plan.

Every precaution has been taken to establish accuracy of the information in this brochure but does not constitute any representation by the vendor or agent.

R&W