



7/76 Elizabeth Bay Road Elizabeth Bay, NSW

| 1 bath

Perfectly located at the entrance to Elizabeth Bay Road's prestigious loop, this 1930's style studio presents a great buying opportunity. On the first floor of a well maintained building it is a city base or investment opportunity.

- > Updated kitchen & bathroom
- > Large floorplan of 27sqm
- > Timber look floors. High ceiling.
- > Building with communal roofdeck & laundry
- > Transport & shops at doorstep

Outgoings (approx.)...

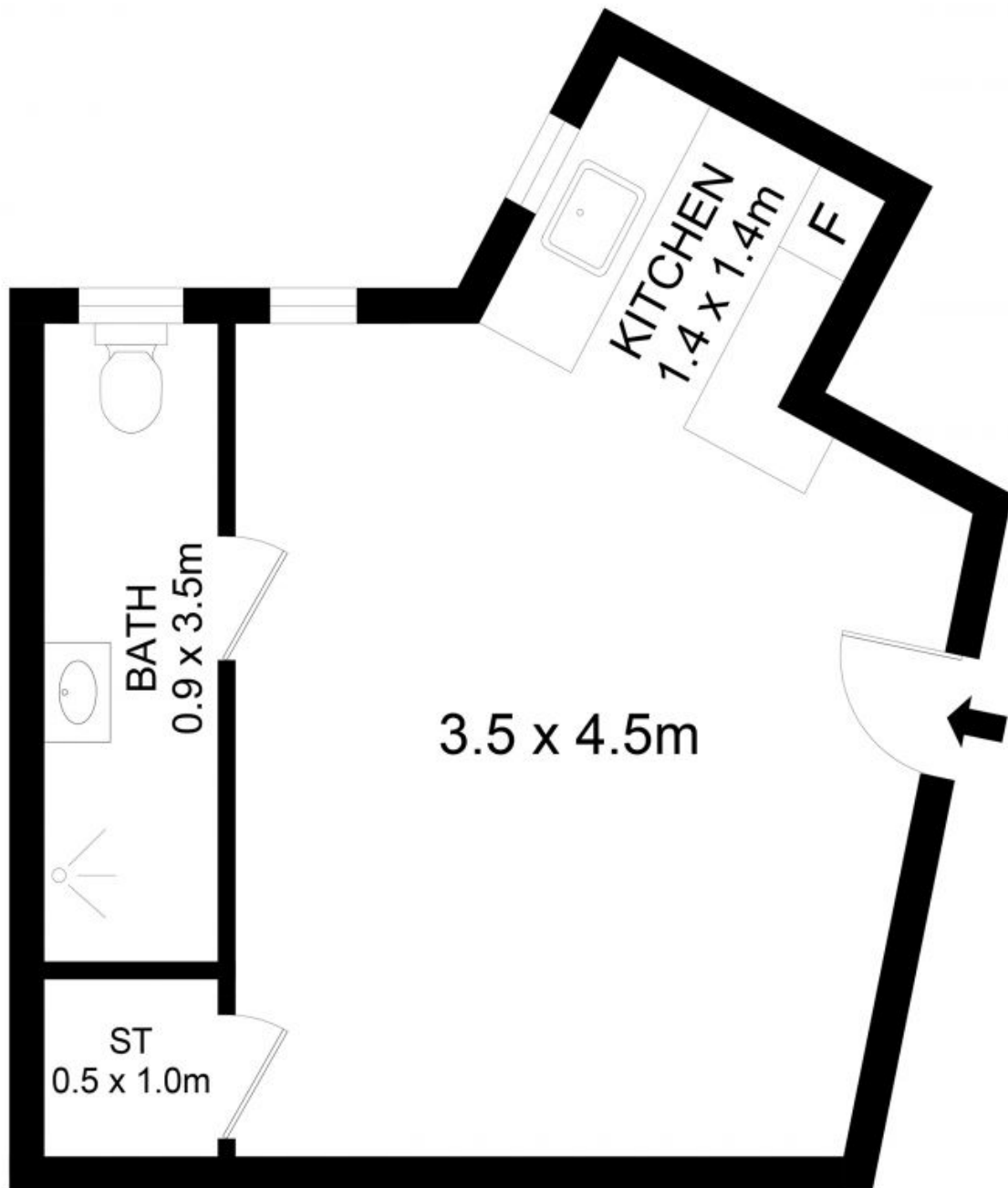
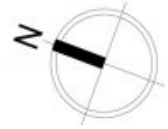
R&W

rwebay.com.au/8514822

Greg McKinley 0412 044 822

Proudly Richardson&Wrench

Richardson & Wrench Elizabeth Bay / Potts Point
02 8356 2700



7/76 Elizabeth Bay Road, Elizabeth Bay

Disclaimer

Floor Plan measurements are approximate and are for illustrative purposes only. While we cannot doubt the floor plans accuracy, we make no guarantee, warranty or representation as to the accuracy and completeness of the floor plan.

Every precaution has been taken to establish accuracy of the information in this brochure but does not constitute any representation by the vendor or agent.

